

# CCR2 Regulates Monocyte Recruitment as well as CD4<sup>+</sup> T<sub>h</sub>1 Allorecognition after Lung Transplantation

Gelman et al. – American Journal of Transplantation 2010; 10: 1189-1199

# Introduction

- Hochregulation von Chemokinen
  - Antigen-unabhängig (chir. Trauma, Hirntod, Reperfusionsschaden)
  - Antigen-abhängig (Invasion aktivierter T-Zellen)

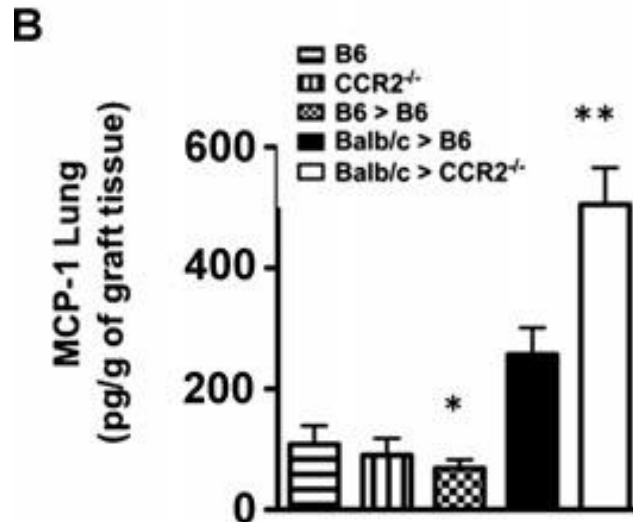
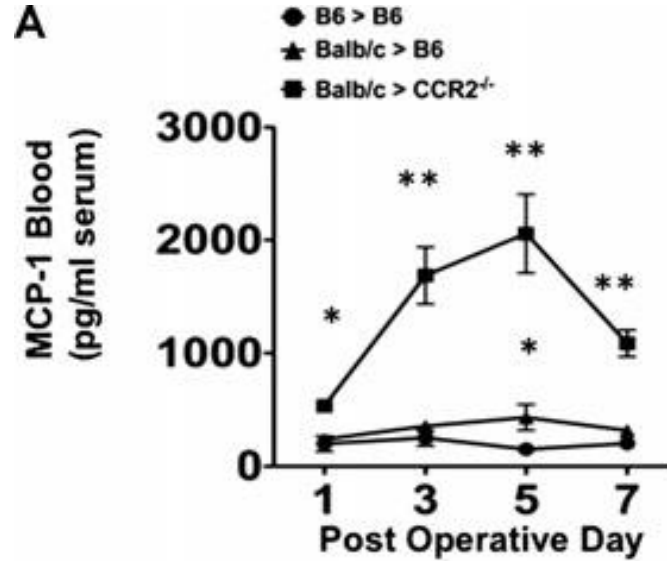
# Introduction

- CC Chemokine Receptor (CCR2)
- Monocyte Chemoattractant Protein-1 (MCP-1; Hauptligand)
- erhöhte Ligandenlevels im Serum -> erhöhtes Abstoßungsrisiko

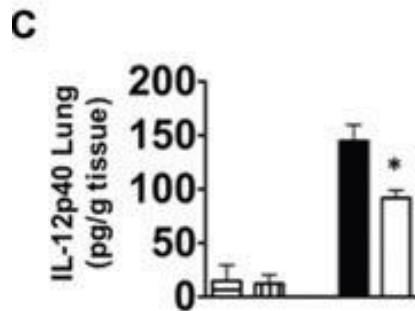
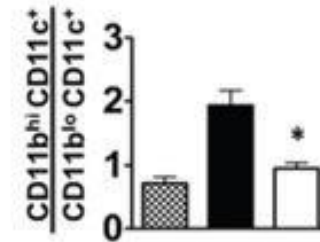
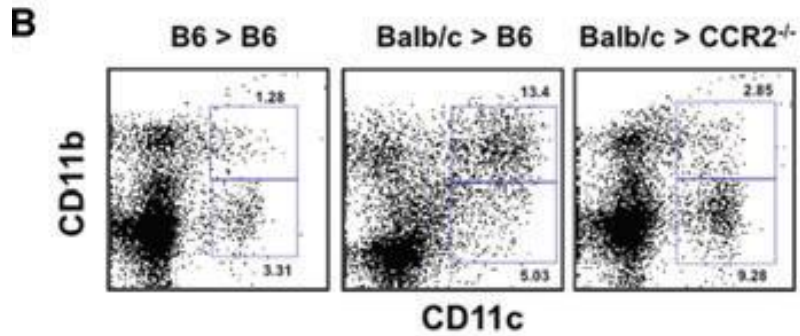
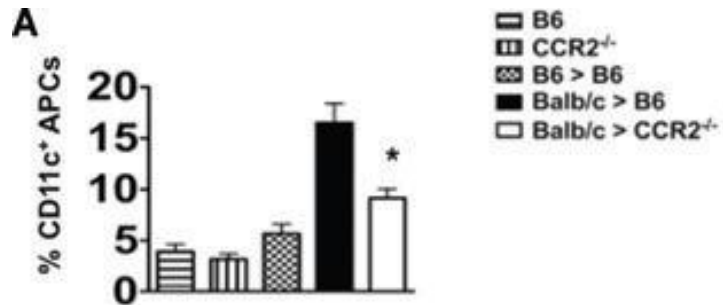
# M&M('s)

- C57Bl/6 (B6)
- Balb/c
- B6 CD 45.1<sup>+</sup>
- B6 CCR2-deficient
- B6 CD11c-EYFP<sup>+</sup>

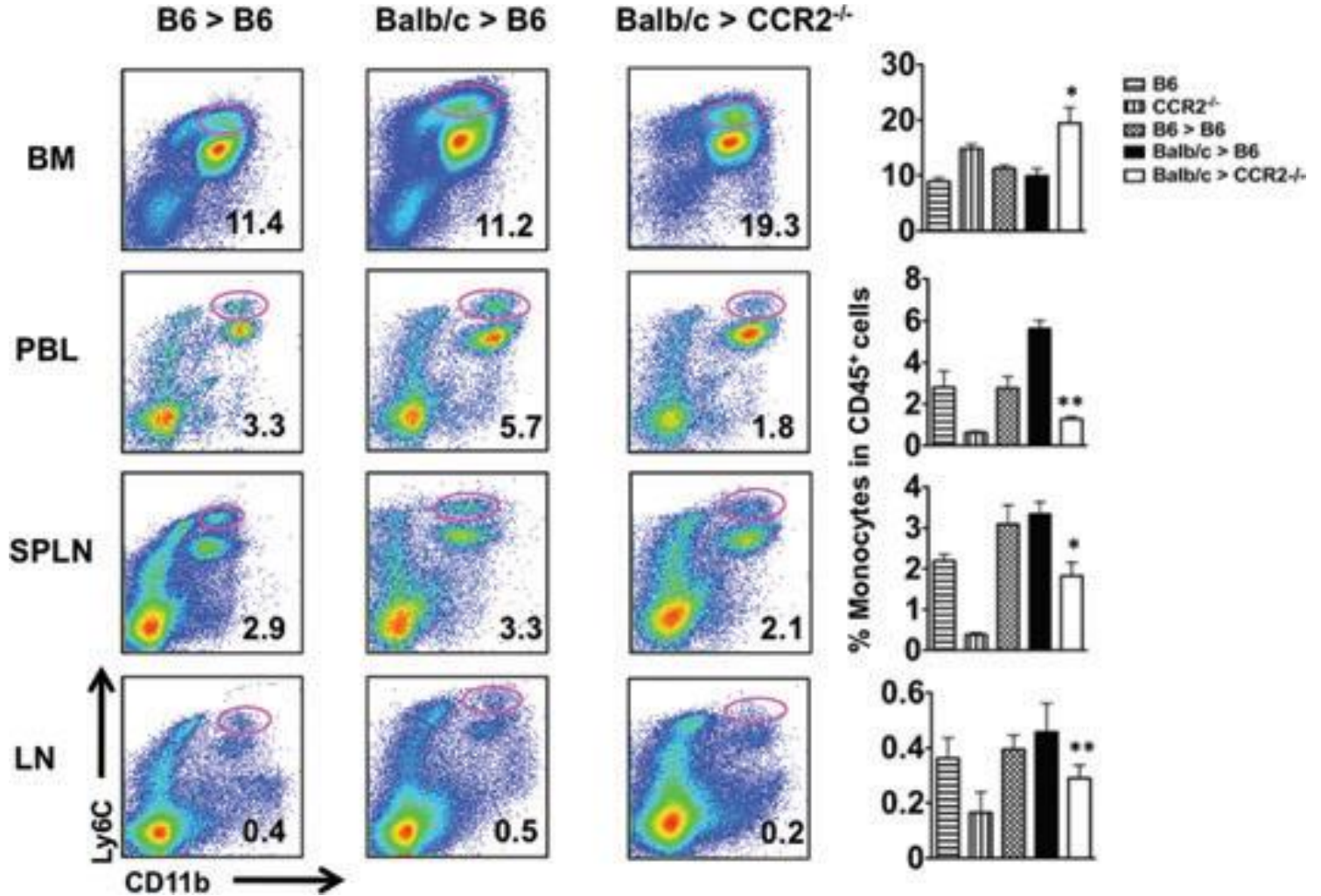
# Results



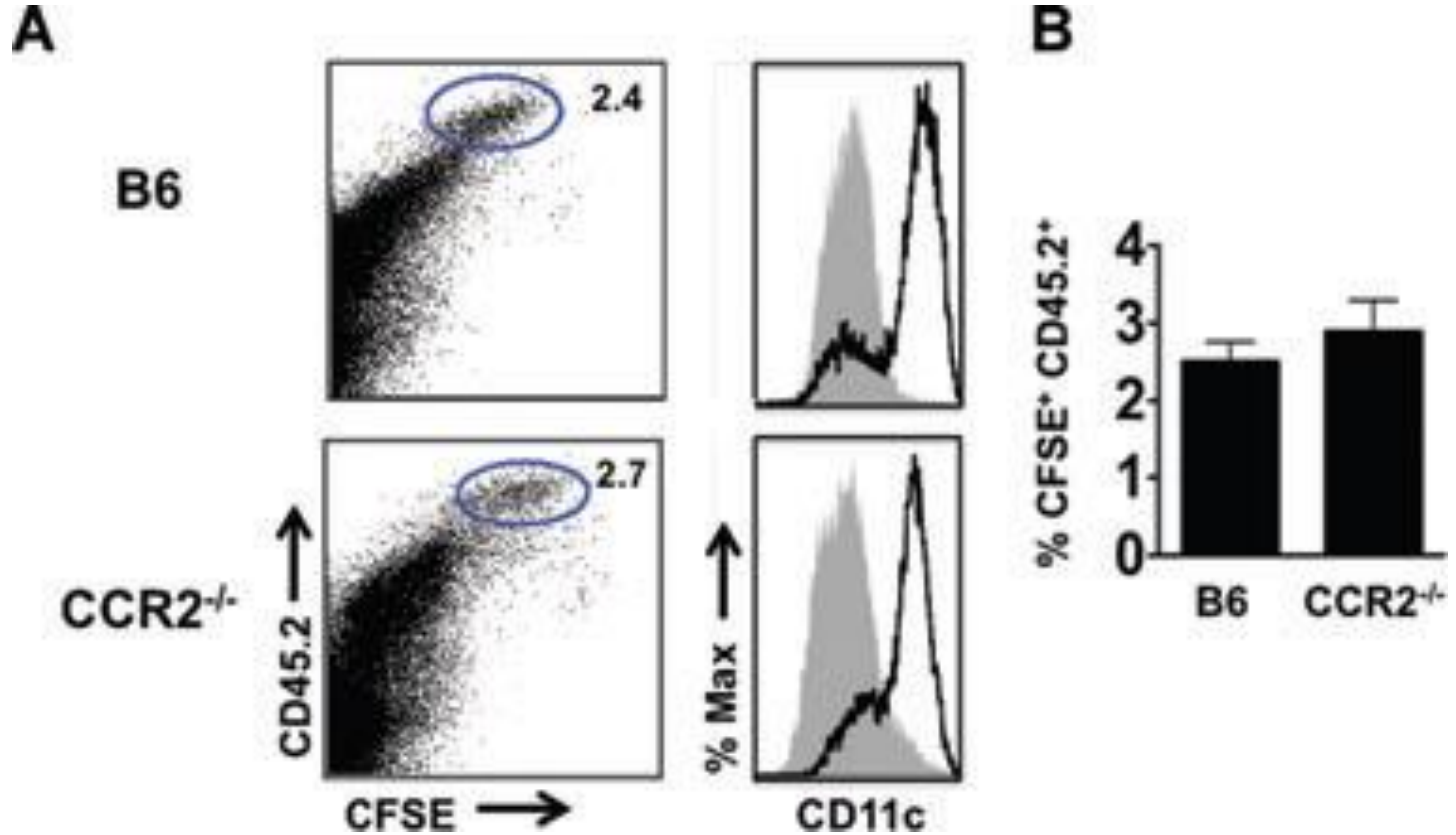
# Results



# Results

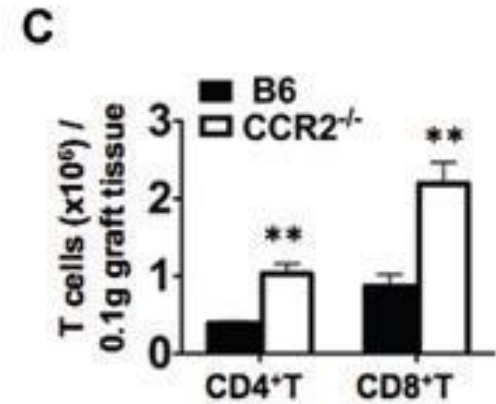
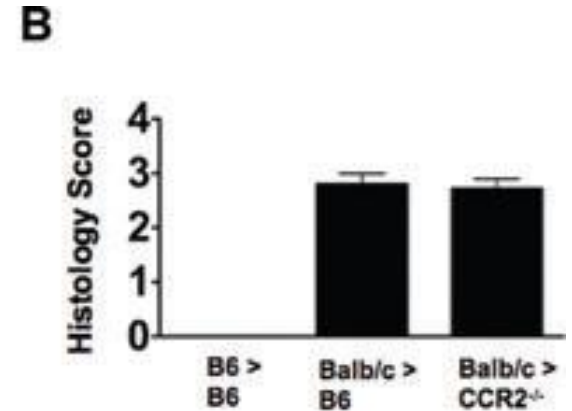
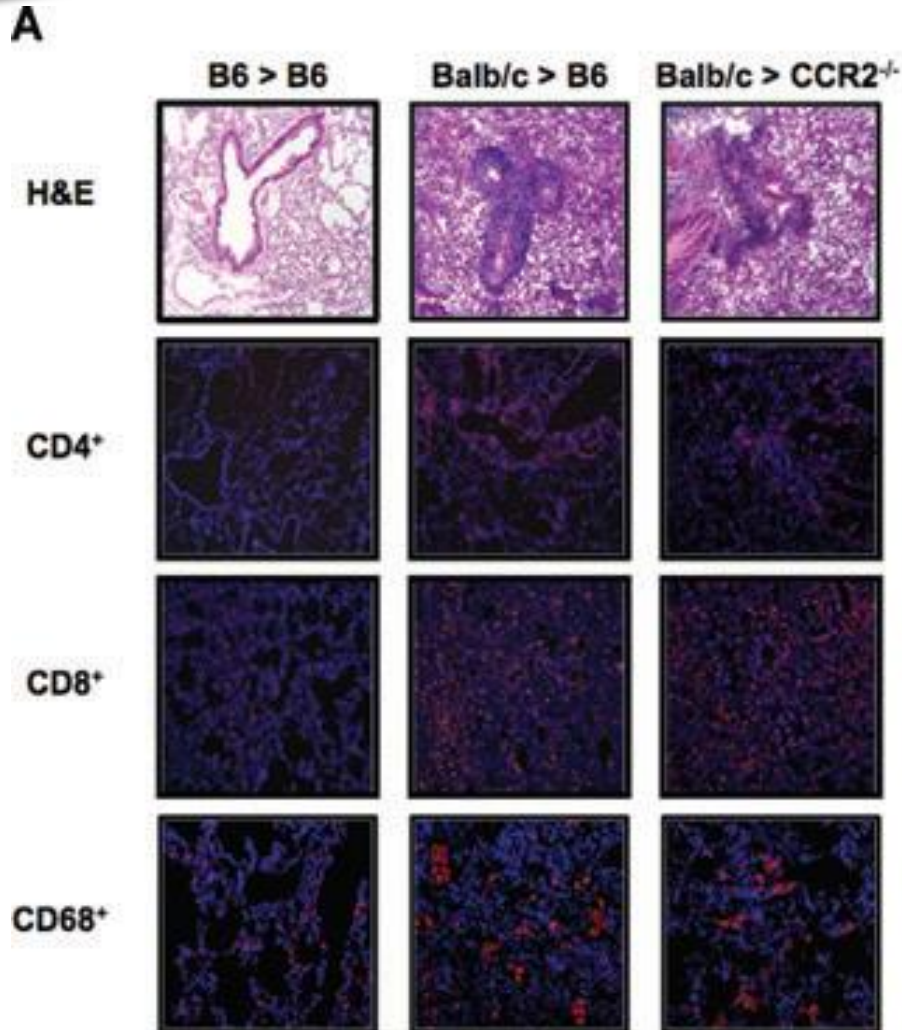


# Results

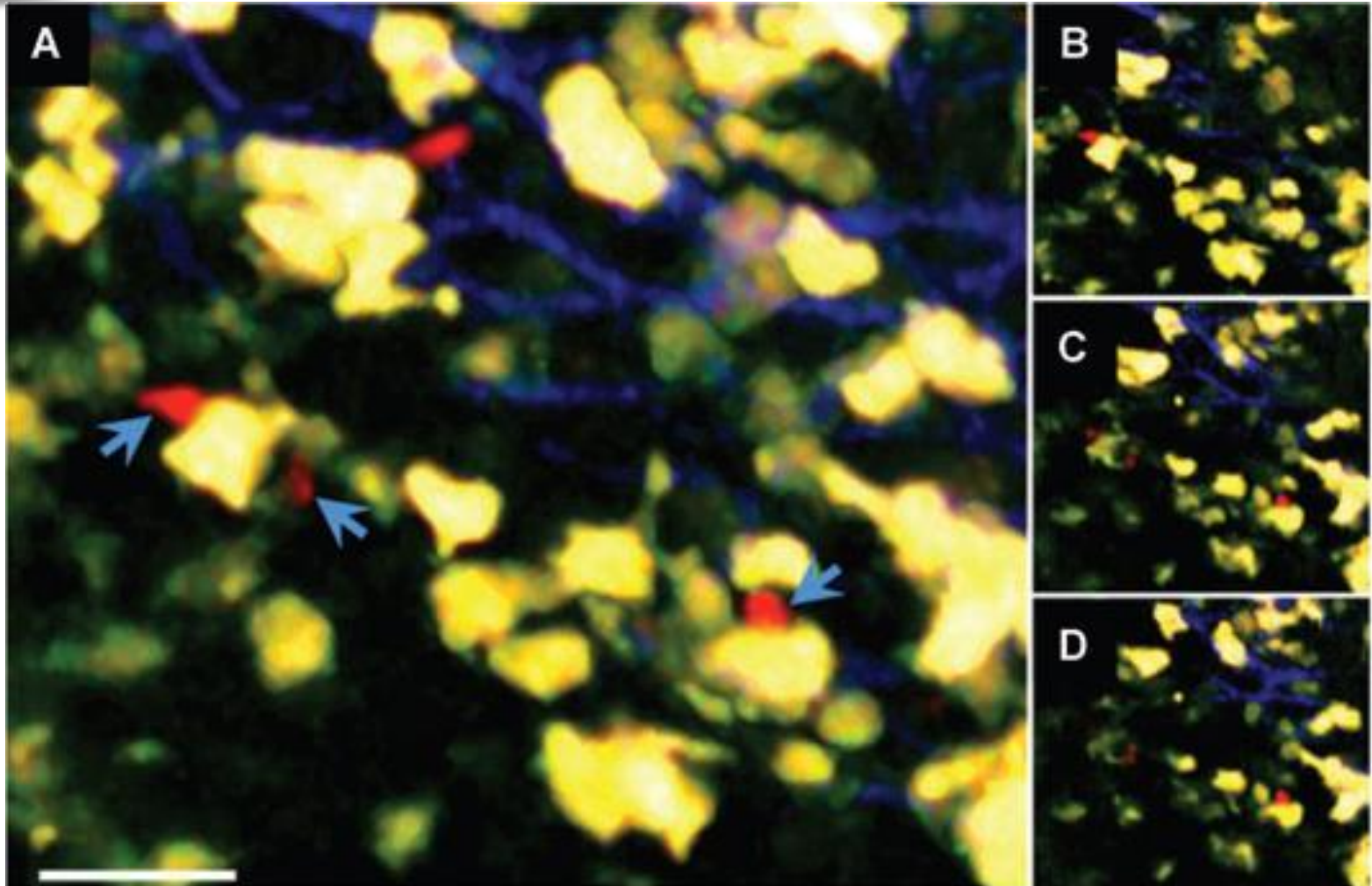




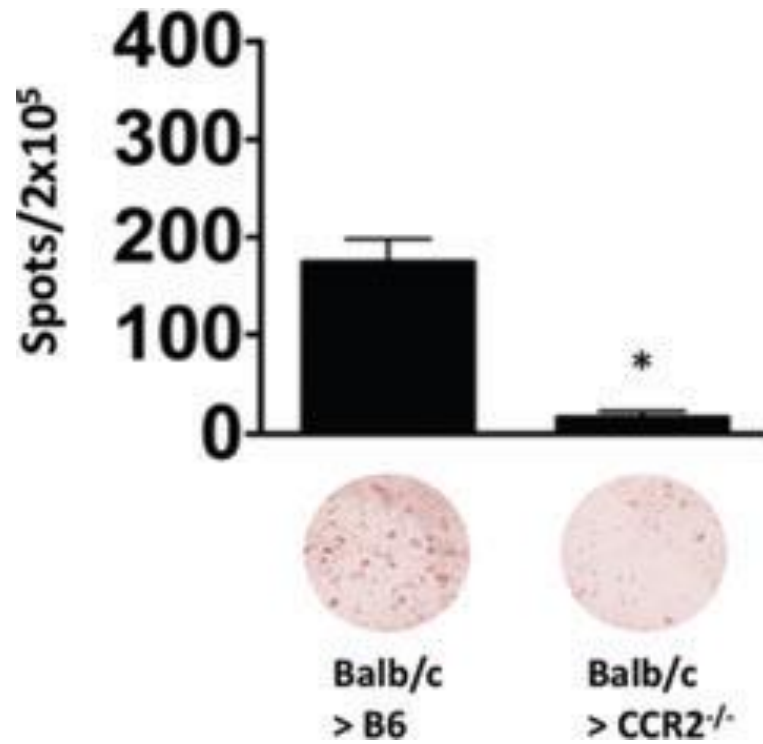
# Results



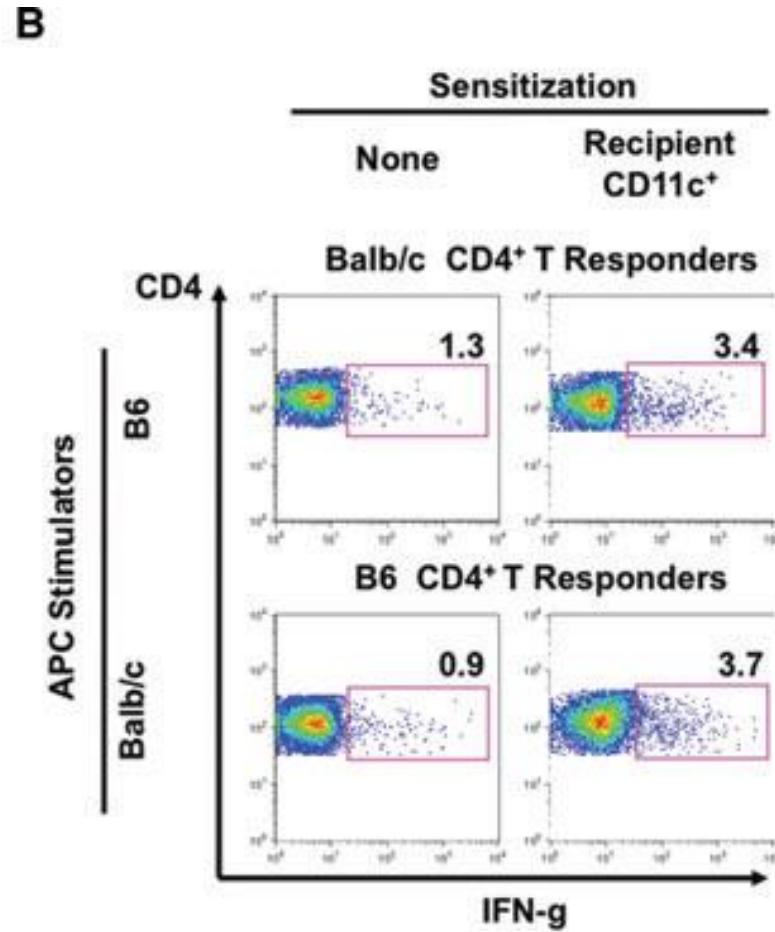
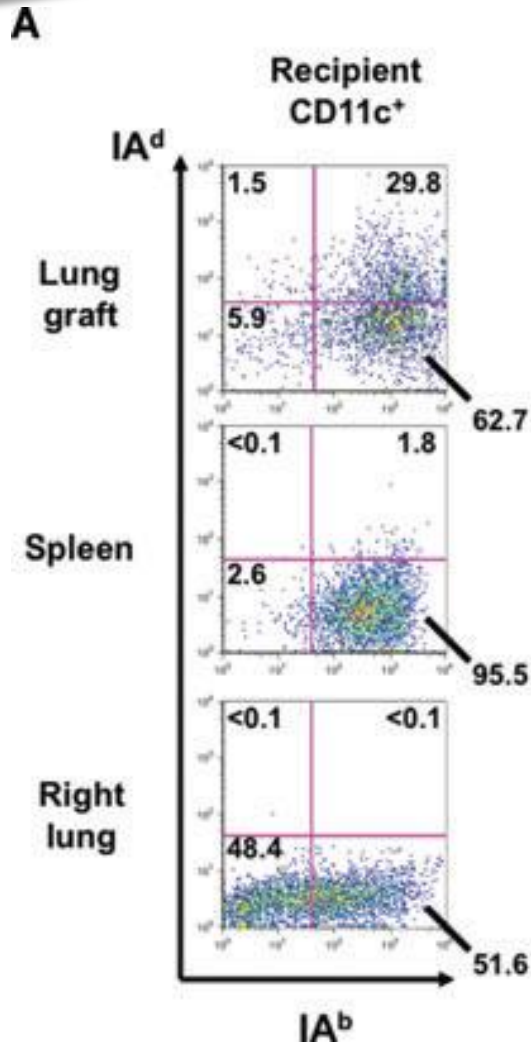
# Results



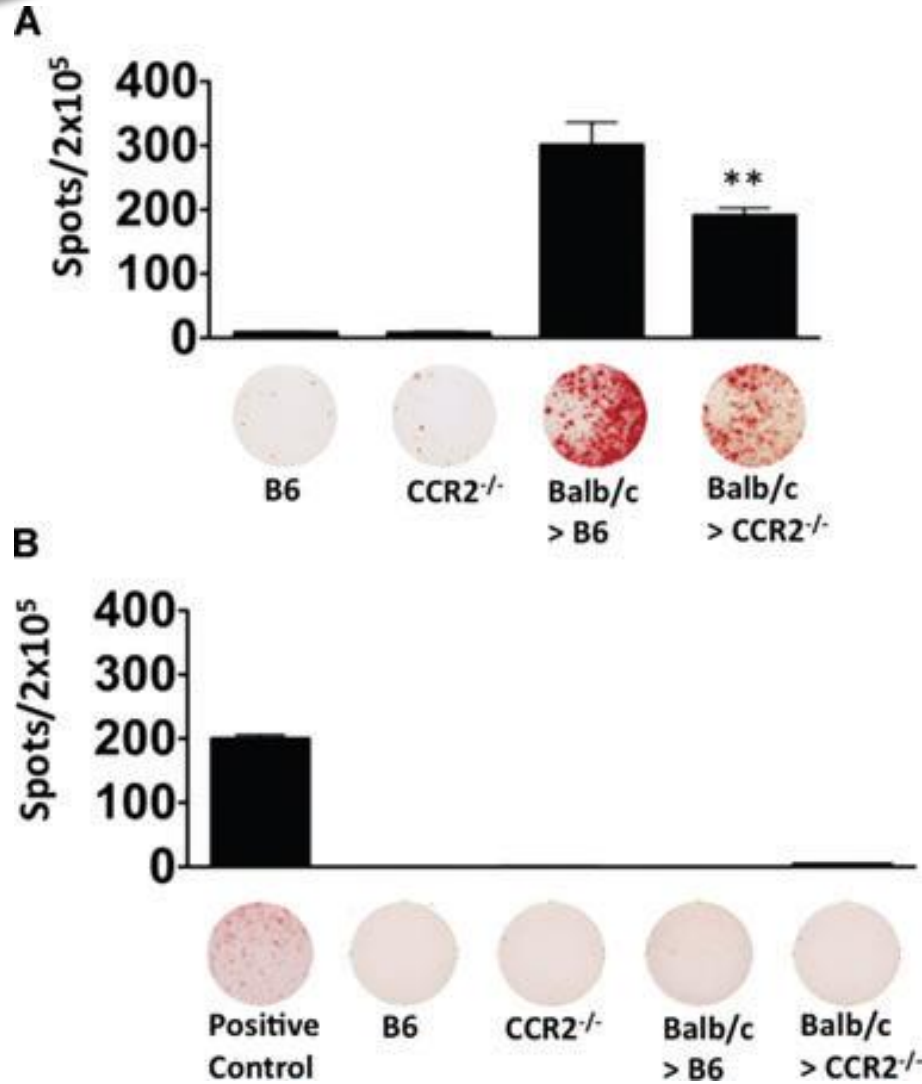
# Results



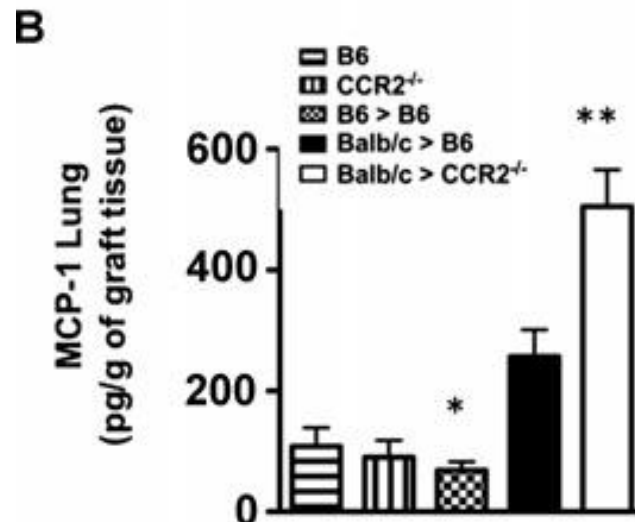
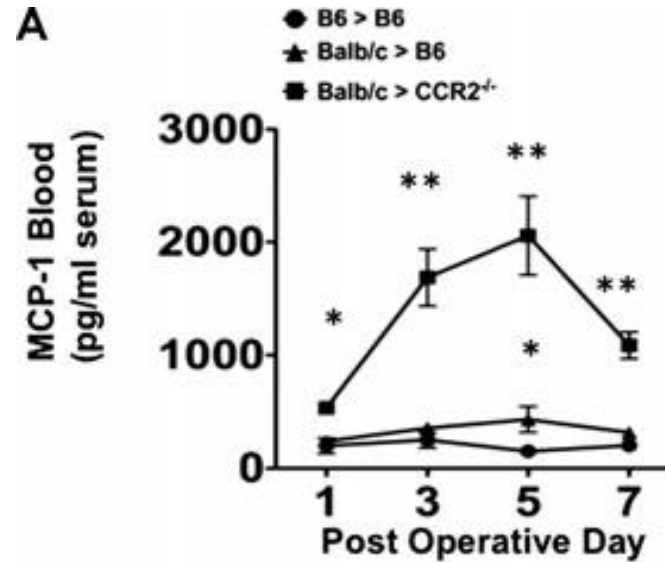
# Results



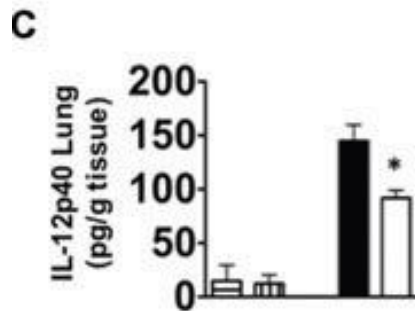
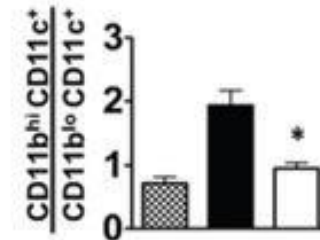
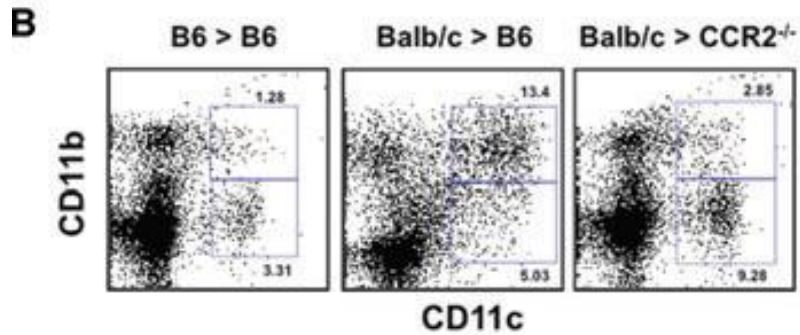
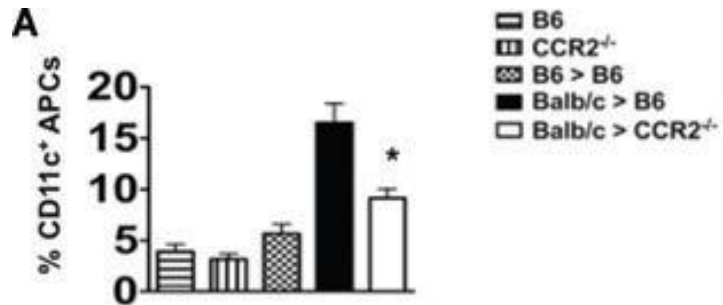
# Results



# Discussion



# Discussion



# Discussion

