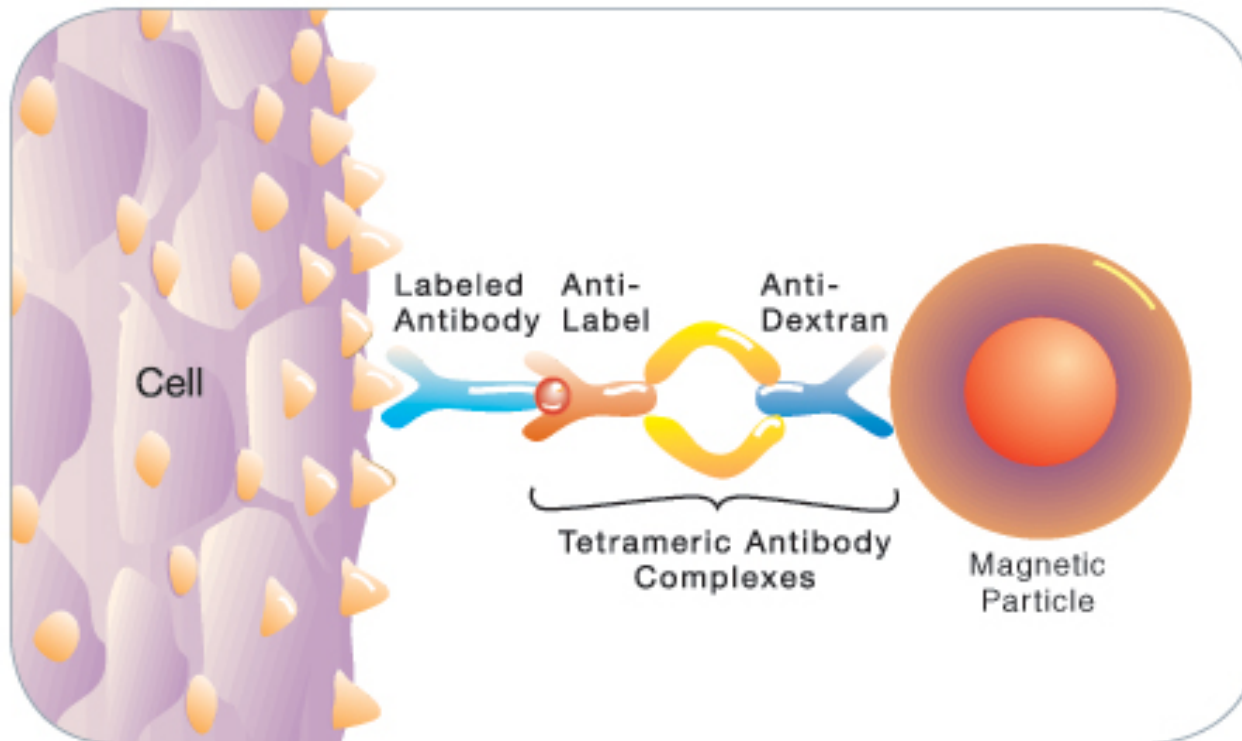
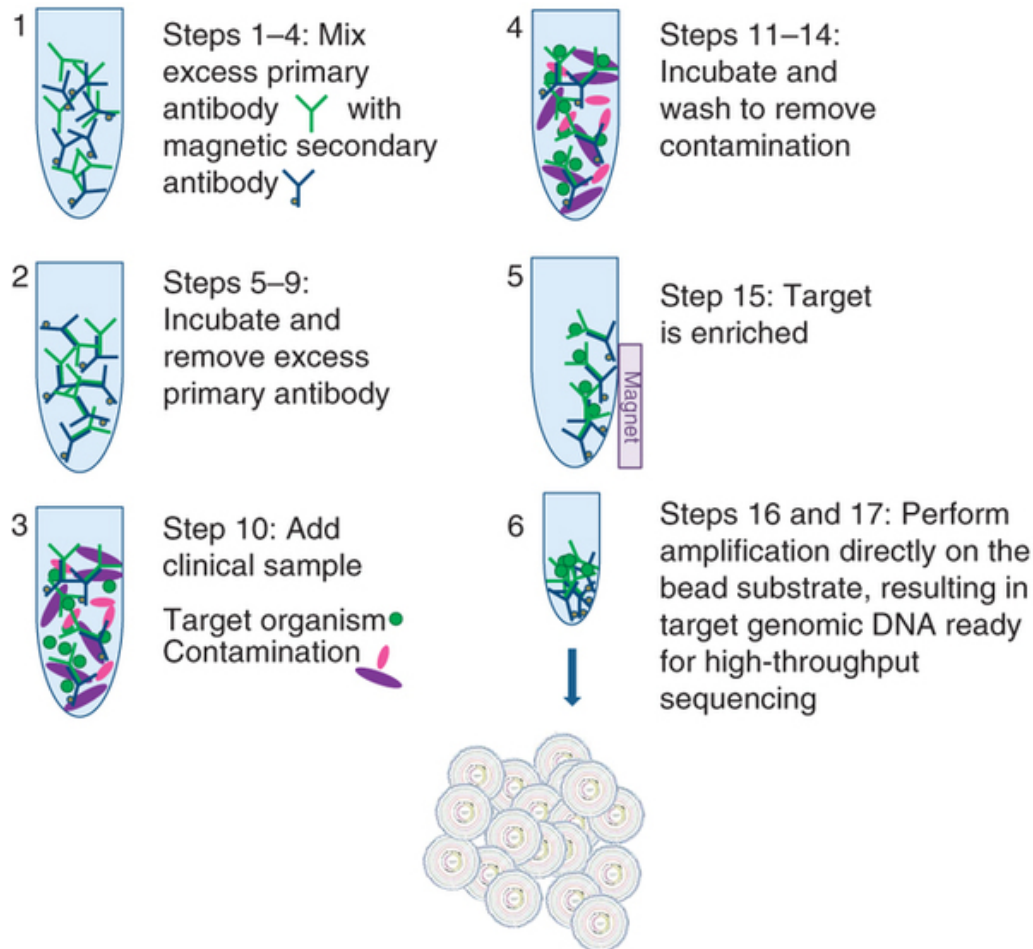


Positive & negative immunomagnetic selection

- Antibodies bind to cell surface antigens
- Magnetic dextran-iron particles
- Separation in magnetized column

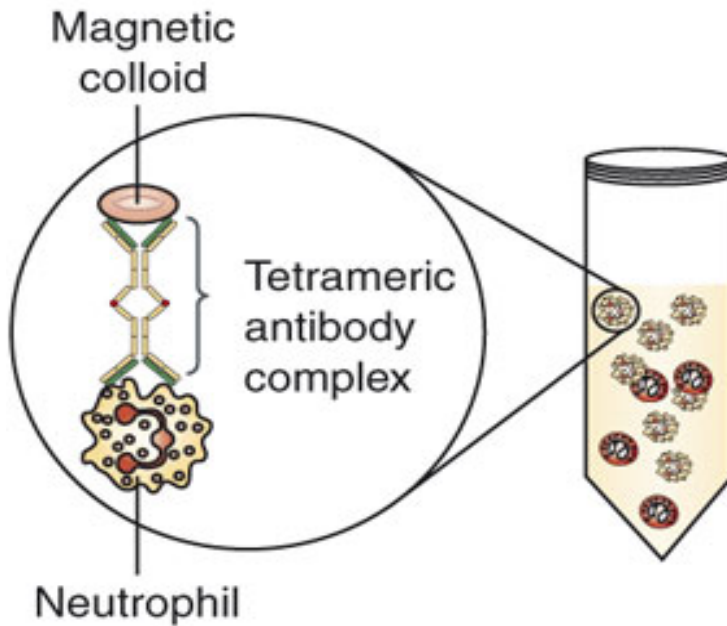


Positive selection

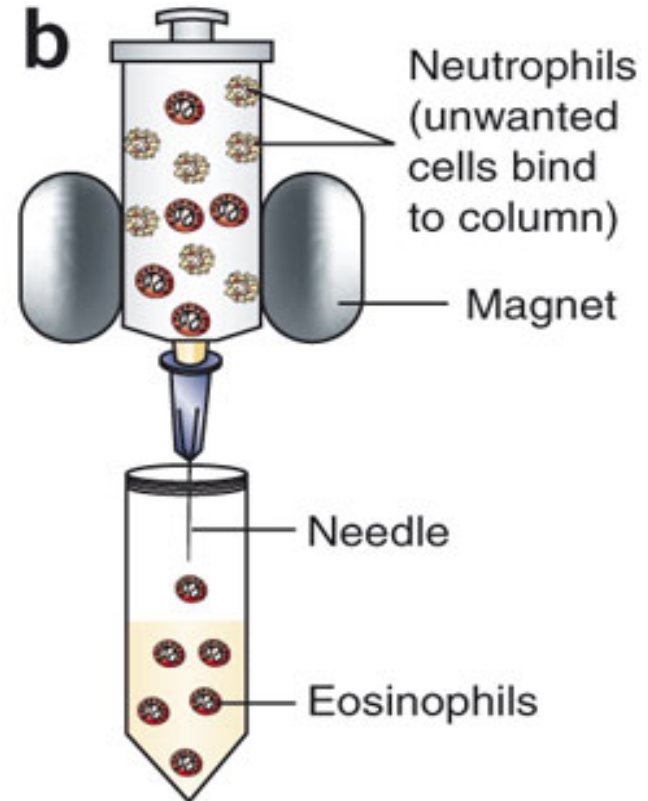


Negative selection

a



b



- Immunomagnetic selection can be used on
 - Blood samples
 - Pleural fluid
 - Cultured cells

- To detect
 - PBMCs
 - Cancer cells etc.

Thank you for your attention!