

# *Methods: Electrophoresis*

Patrick Altmann

*October 2013*

# Agarose Gel

## ➤ 1% Agarose Gel

- 0,5g Agarose in 50mL TAE buffer
- Microwave 1,5min
- Add 2 $\mu$ L EtBr
- Pour into chamber
- Put in comb
- Let gel cool for 1 hour
- Fill chamber with TAE buffer



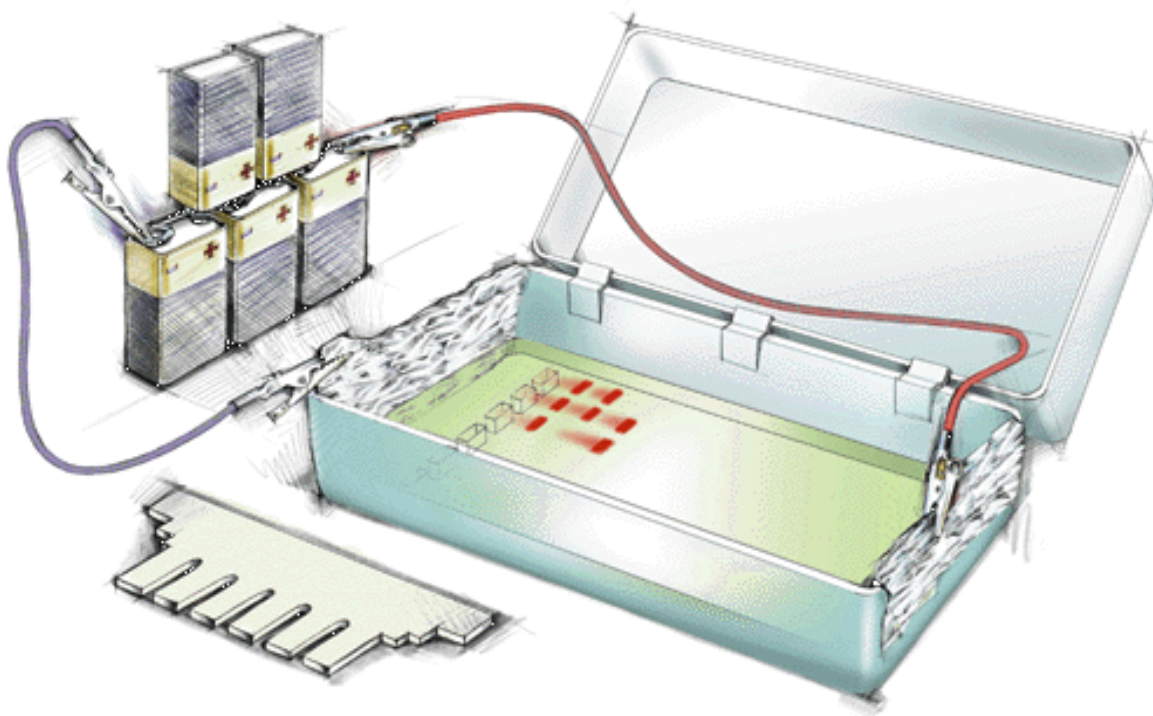
Christian  
Doppler  
Laboratory

for  
Cardiac and Thoracic  
Diagnosis & Regeneration



MEDIZINISCHE  
UNIVERSITÄT  
WIEN

# Chamber



# Samples

## ➤ Samples:

- Mix DNA (isolated e.g. using QIAamp DNA mini kit) with loading dye
  - E.g. 1 $\mu$ L loading dye + 4 $\mu$ L of DNA sample
  - Prepare Marker = Lambda DNA hindIII digest
- Pipette Marker and Sample
- Start Battery



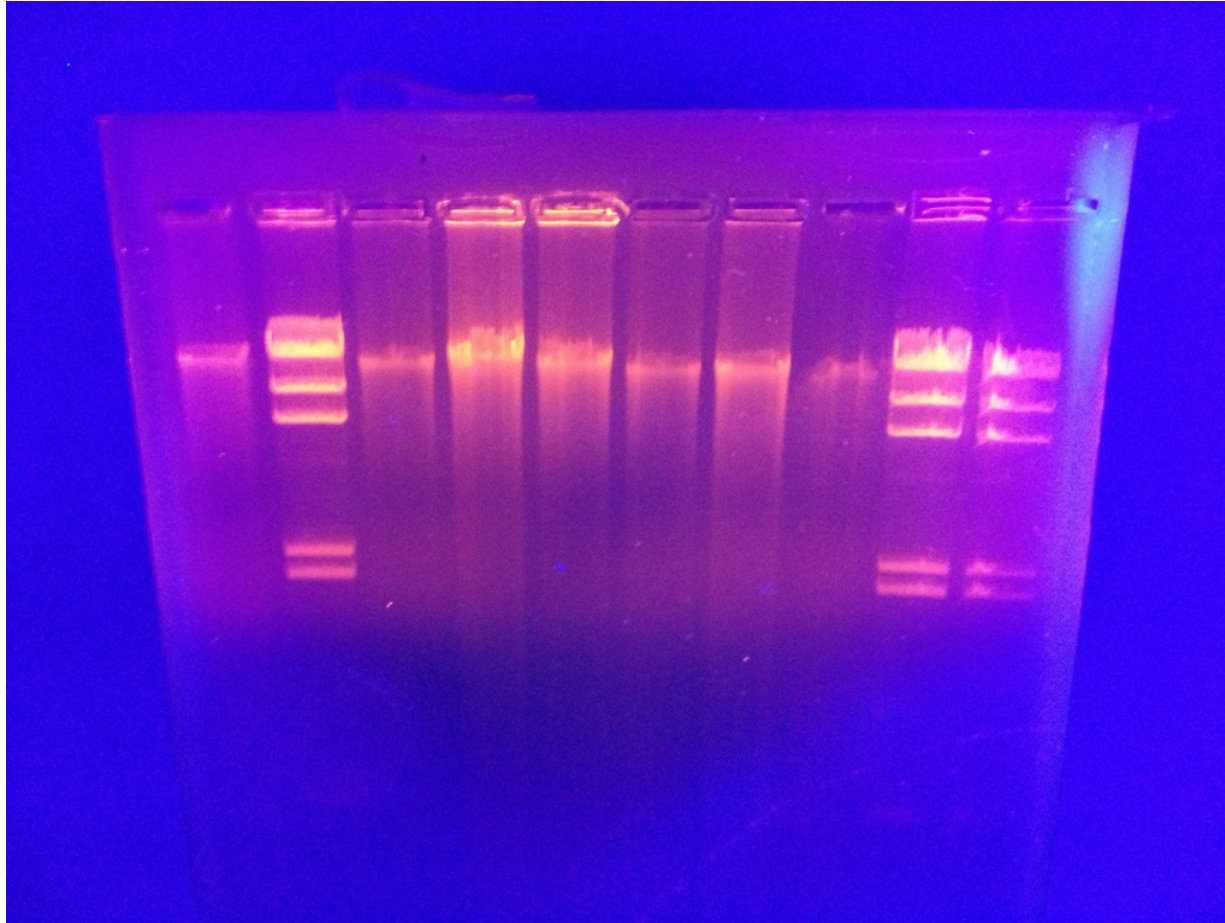
Christian  
Doppler  
Laboratory

for  
Cardiac and Thoracic  
Diagnosis & Regeneration



MEDIZINISCHE  
UNIVERSITÄT  
WIEN

# Result



*Thank you*