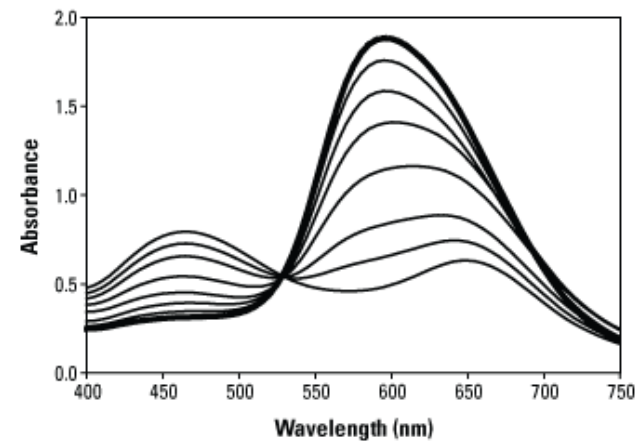
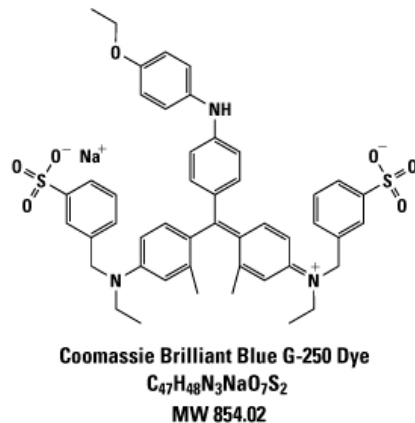


Bradford-Assay & Western blot

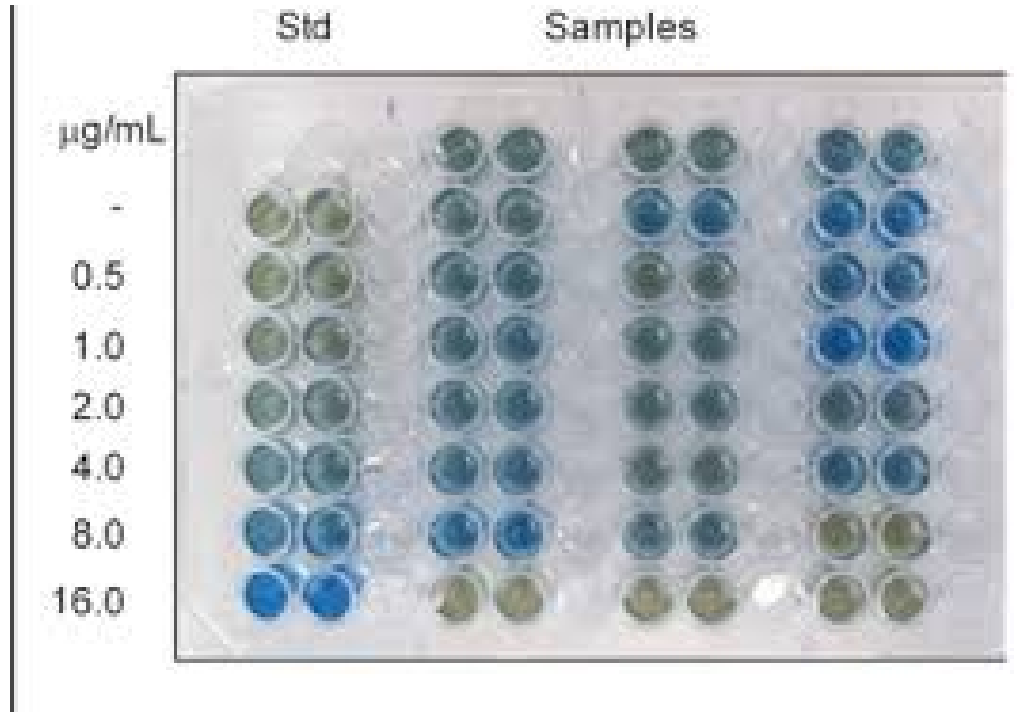
Labmeeting 20.01.2014

Bradford Assay

- Purpose: Colorimetric determination of total protein concentration in a sample
 - „/ng total protein“
 - loading volume Western blot
- Protein + Coomassie dye -> Protein-Dye complex
- brown (absorbance maximum at 465nm) -> blue (absorbance maximum at 610nm).



Bradford Assay

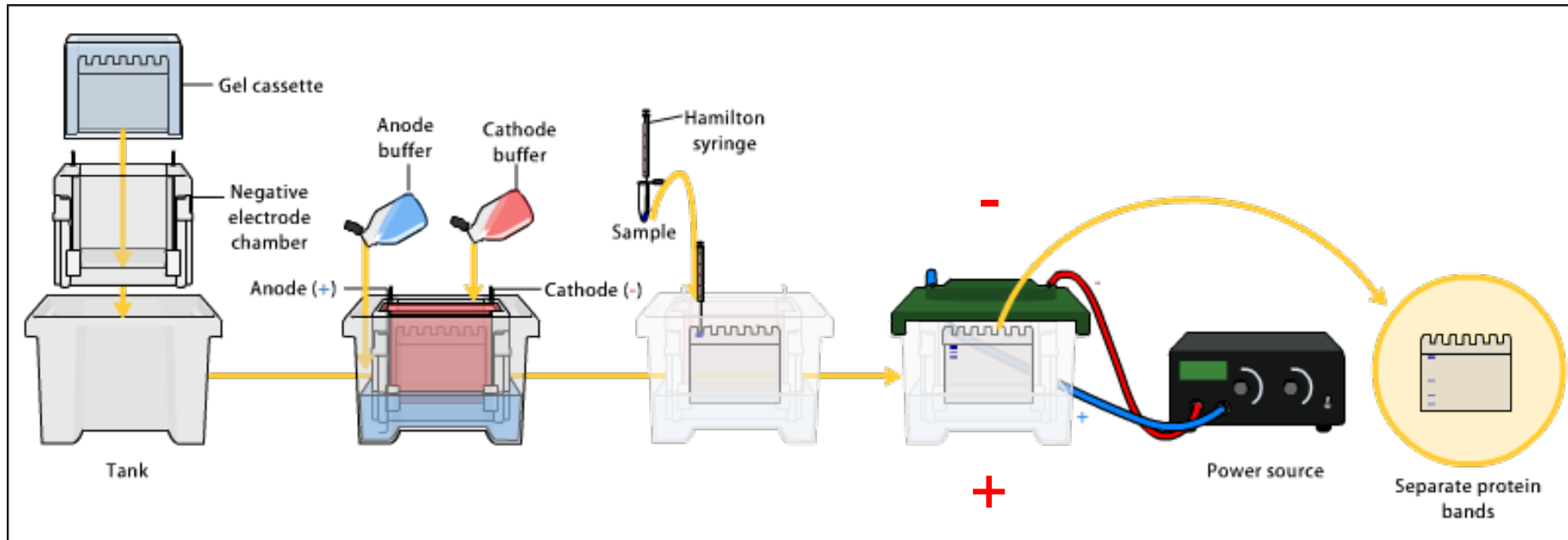


Western blot

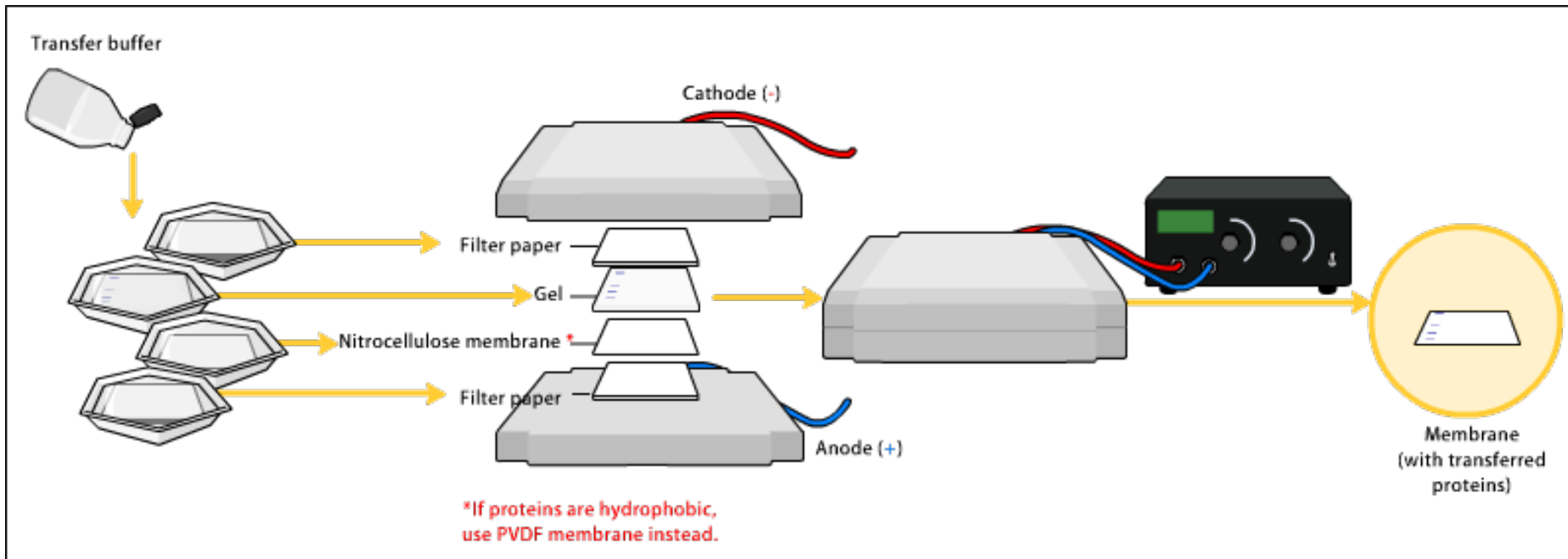
Western Blot

- Northern Blot: RNA
 - Southern (“Edwin Southern“) Blot: DNA
 - **Western Blot: Proteins**
-
- Purpose: Antibody-based, semiquantitative detection of specific protein in a sample

Western Blot

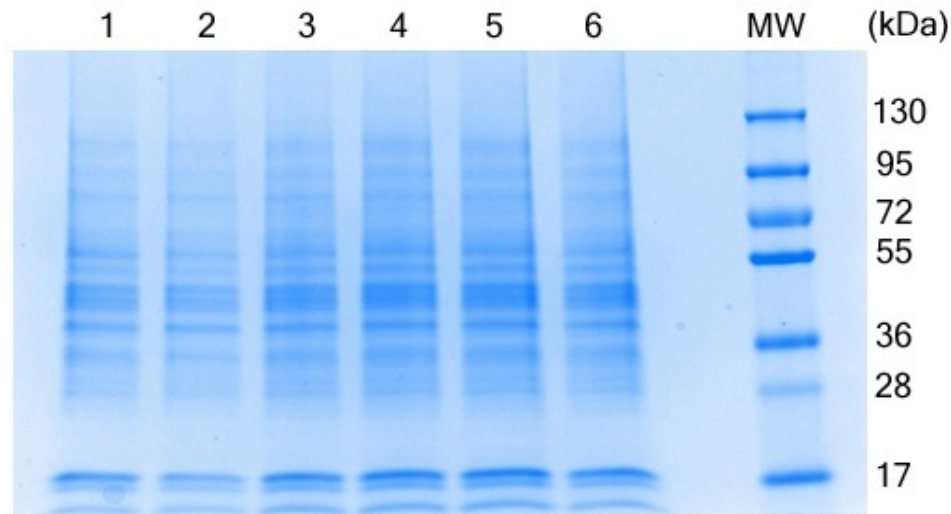


Western Blot



Western Blot

Whole Cell Lysates (WCL)
SDS-PAGE 4-20% (Bio-Rad precast gel)
Blue Coomassie staining



1 = Hela WCL (W09-000-364)
2 = Jurkat WCL (W09-001-370)
3 = HEK 293 WCL (W09-000-365)
4 = MCF-7 WCL (W09-000-360)
5 = A 549 WCL (W09-001-372)
6 = Raji WCL (W09-001-368)



Christian
Doppler
Laboratory

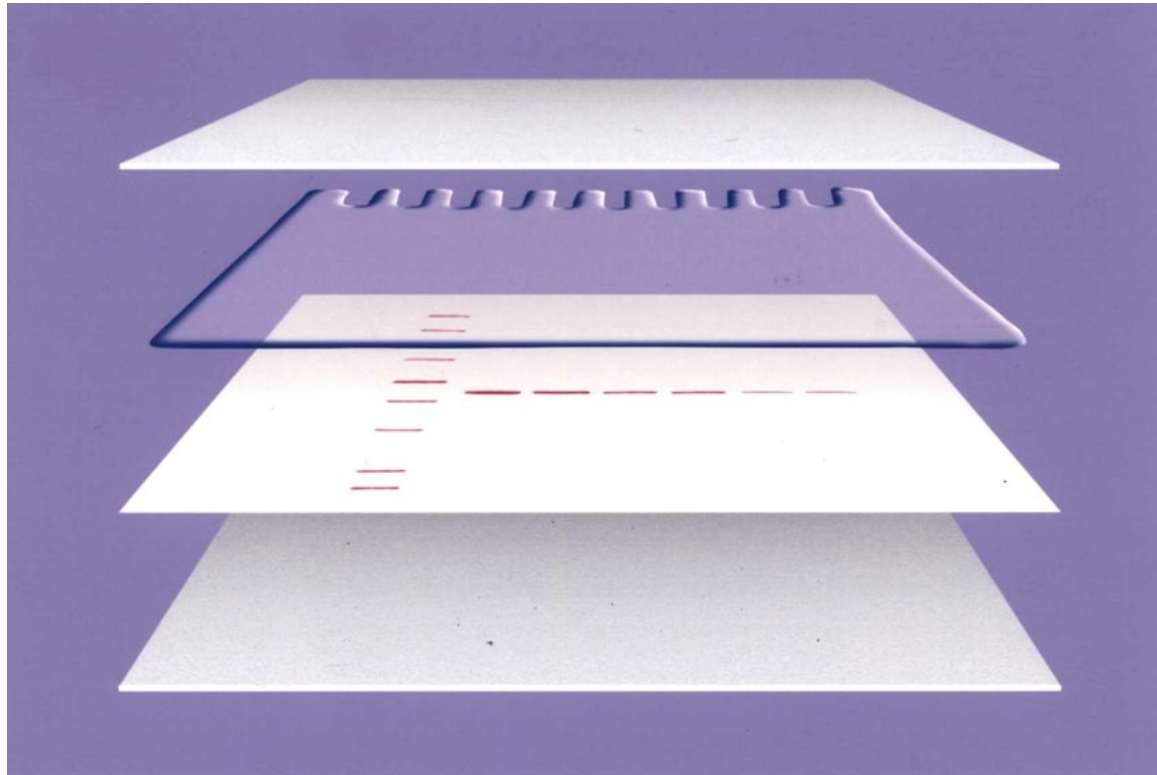
for
Cardiac and Thoracic
Diagnosis & Regeneration



MEDIZINISCHE
UNIVERSITÄT
WIEN

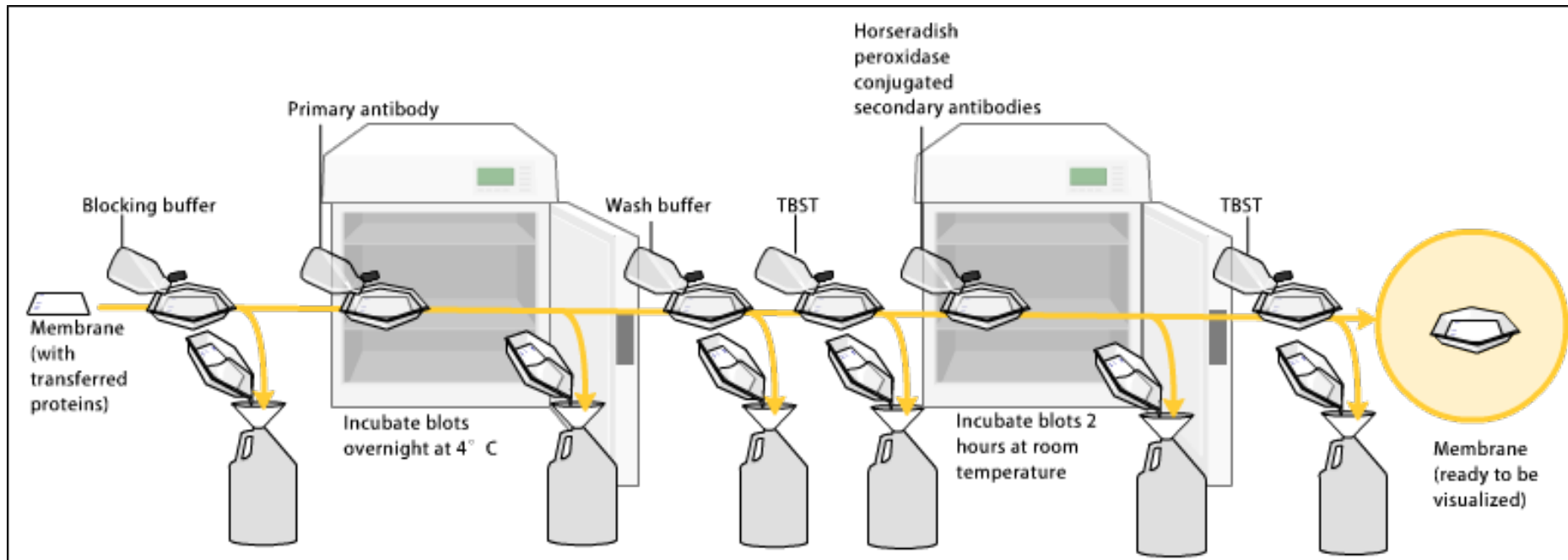
Western Blot

-

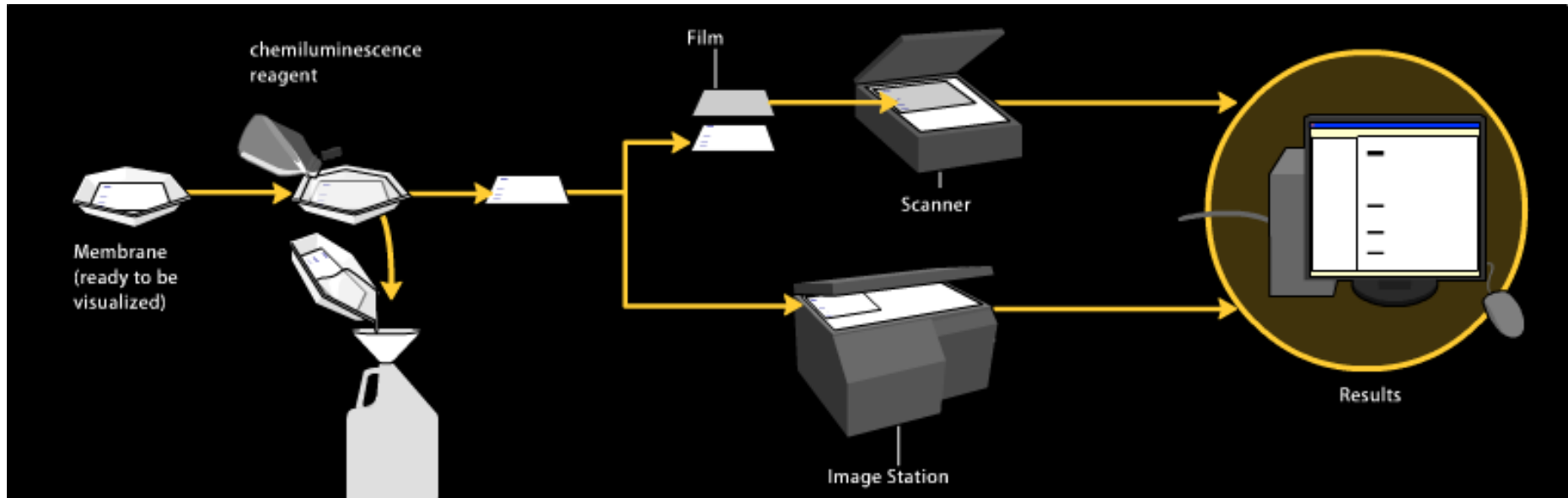


+

Western Blot



Western Blot



Western Blot

