

Single-Cell Genomic Characterization Reveals the Cellular Reprogramming of the Gastric Tumor Microenvironment

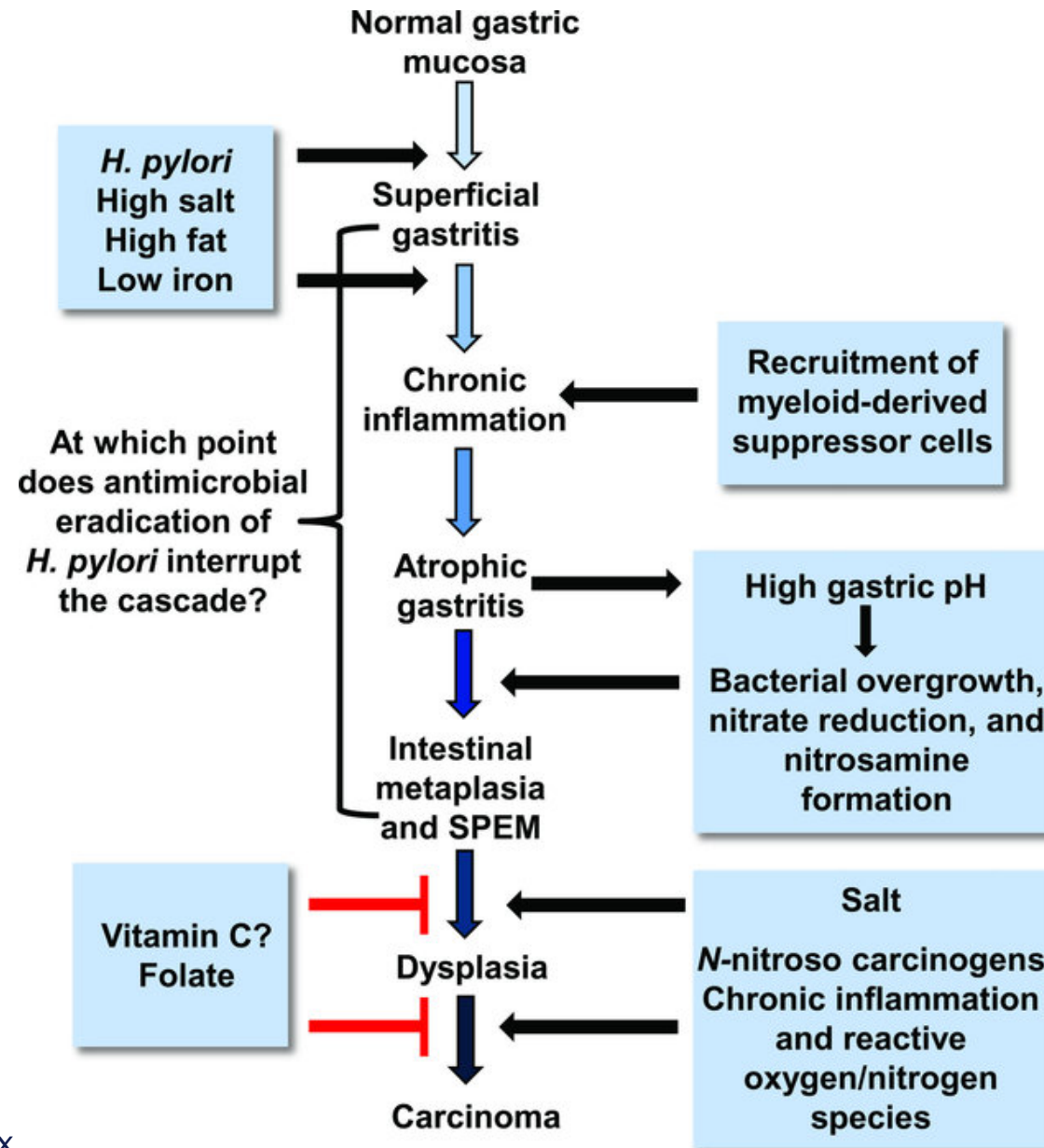
Sathe et al.

CLINICAL CANCER RESEARCH | Feb 17;12(1):1096 February 14, 2020

DOI: 10.1158/1078-0432.CCR-19-3231

Gastric cancer

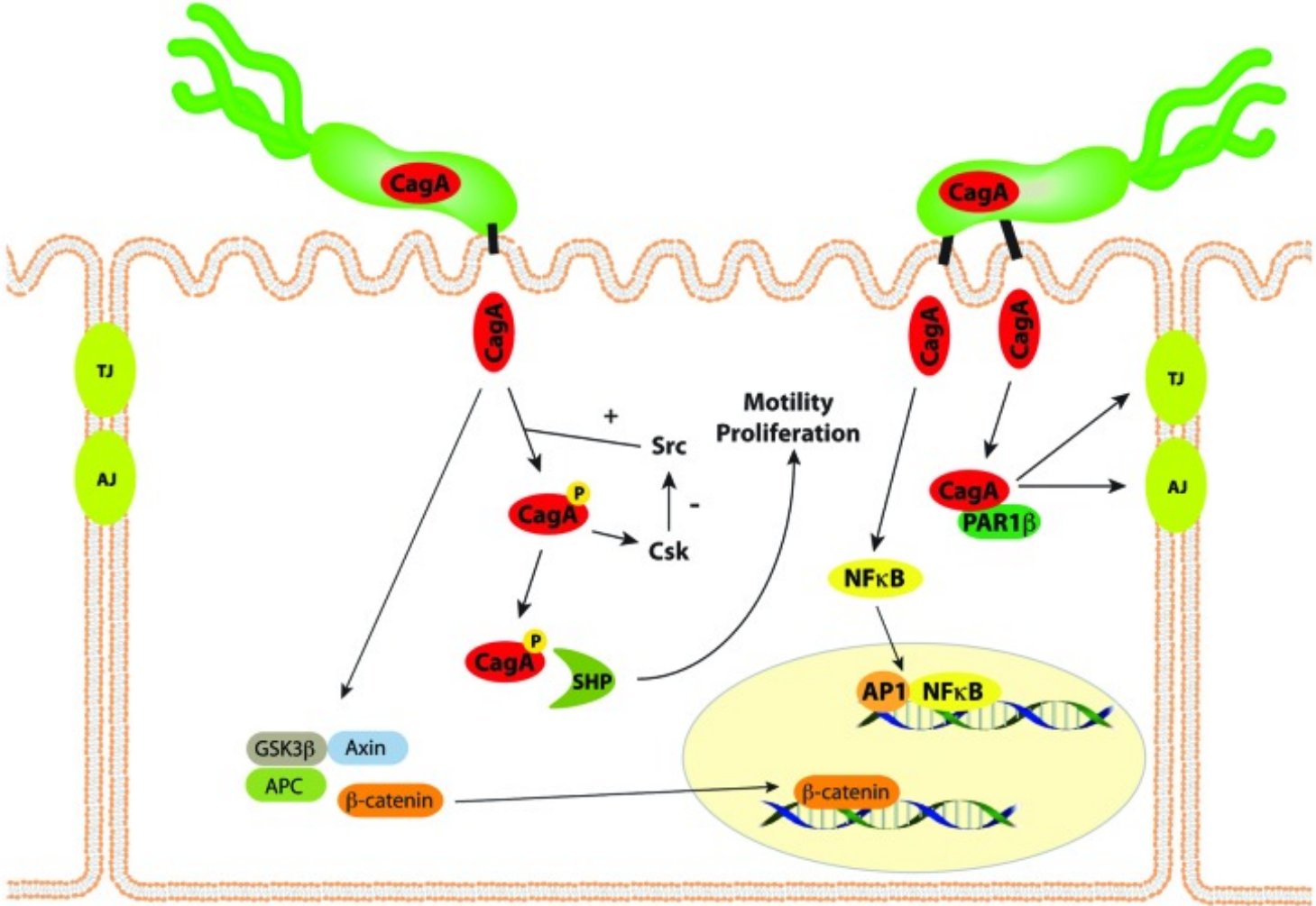
Correa Cascade



DOI: [10.1177/0192623313512564](https://doi.org/10.1177/0192623313512564)

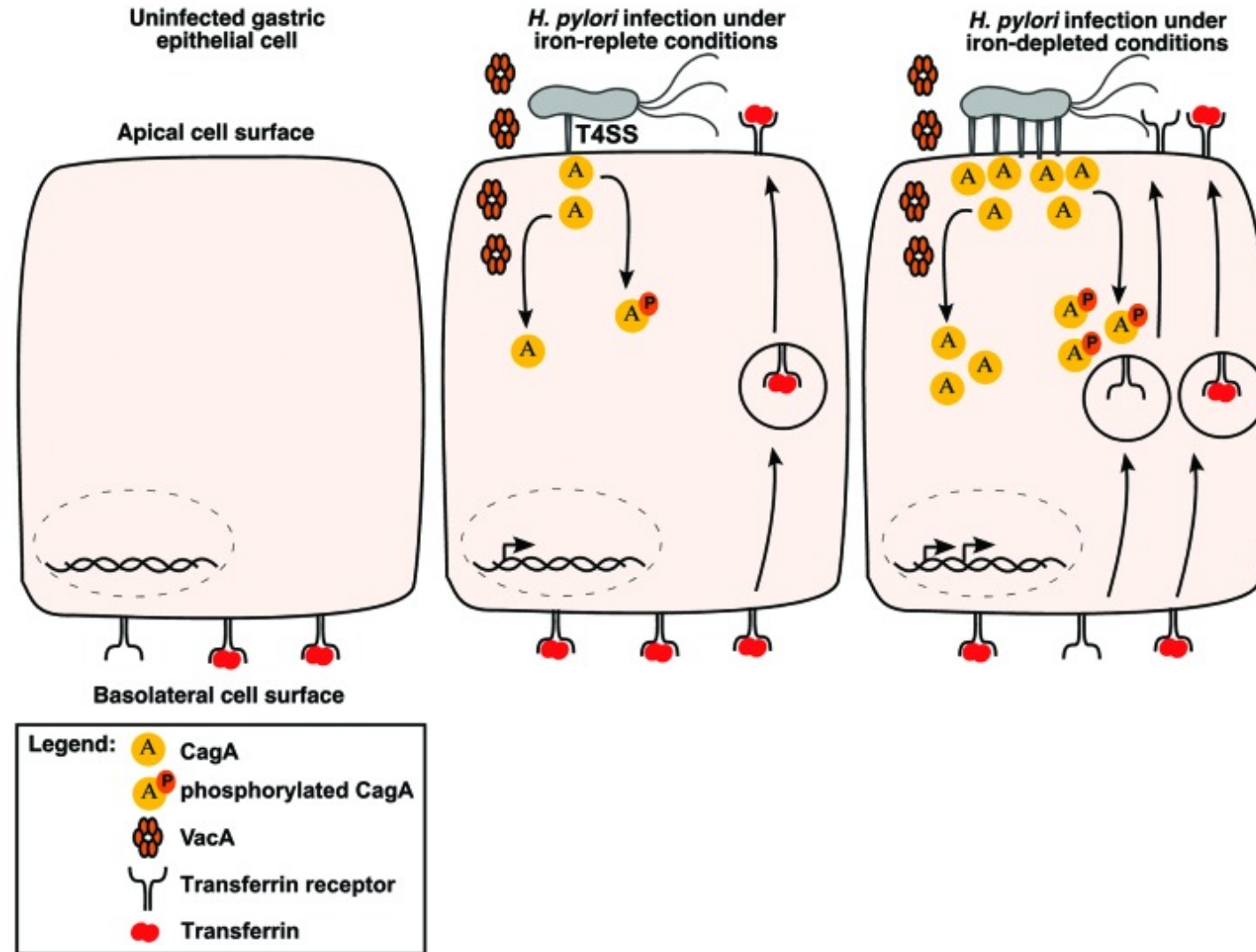
DOI: [10.1111/j.1751-2980.2011.00550.x](https://doi.org/10.1111/j.1751-2980.2011.00550.x)

Background: H.pylori



DOI: 10.4161/gmic.26262

Background: H.pylori



DOI: 10.4161/gmic.26262

Gastric cancer

- diffuse seborrheic keratoses in combination with acanthosis nigricans: Leser-Trélat-syndrome
- Most patients are symptomatic, with weight loss and abdominal pain



DOI: [10.1177/0192623313512564](https://doi.org/10.1177/0192623313512564)

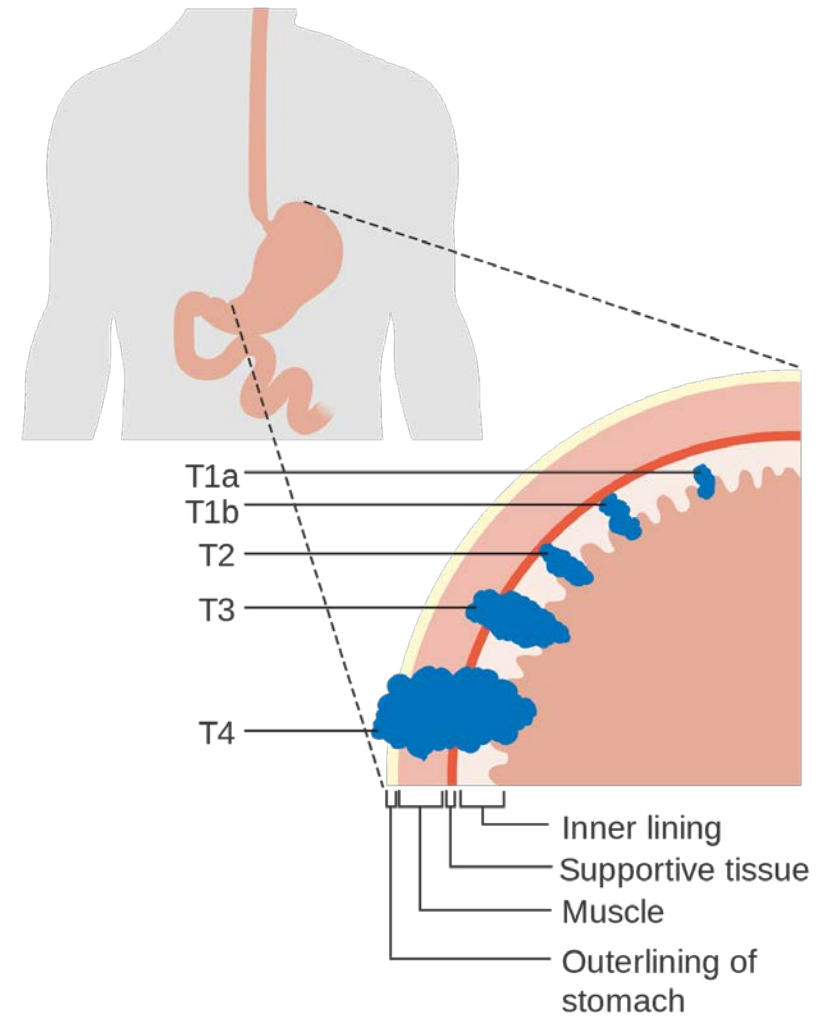
DOI: [10.1111/j.1751-2980.2011.00550.x](https://doi.org/10.1111/j.1751-2980.2011.00550.x)

Gastric cancer

Biomarkers

- CEA, CA 125, CA 19-9, and CA 72-4
- Alpha-fetoprotein
- Pepsinogen

- Helicobacter pylori infection in 65–80%
- 2% of people with H. pylori develop stomach cancer



DOI: [10.1177/0192623313512564](https://doi.org/10.1177/0192623313512564)

DOI: [10.1111/j.1751-2980.2011.00550.x](https://doi.org/10.1111/j.1751-2980.2011.00550.x)

DOI: [10.3748/wjg.v20.i19.5679](https://doi.org/10.3748/wjg.v20.i19.5679)

DOI: [10.1111/hel.12082](https://doi.org/10.1111/hel.12082)

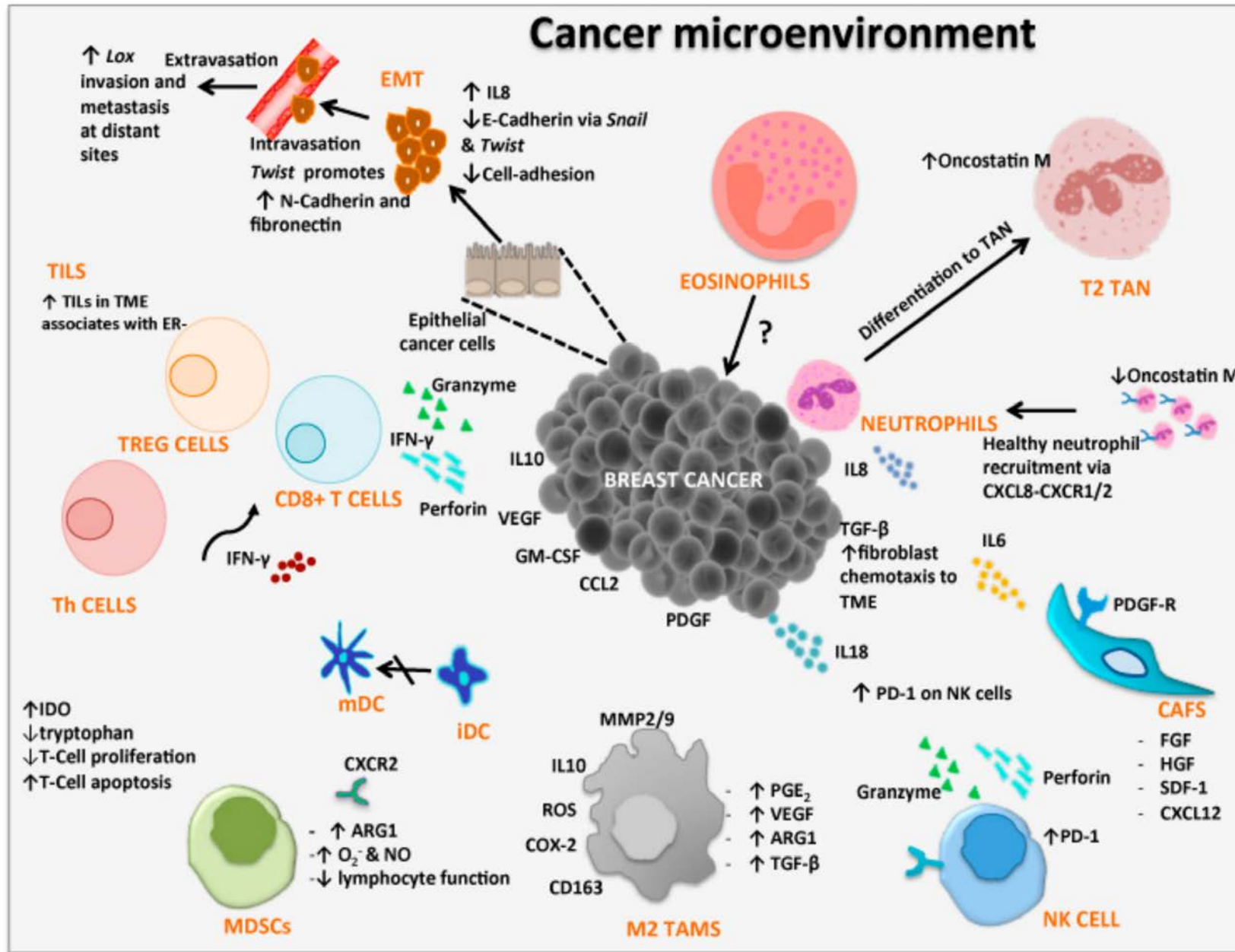
Gastric cancer

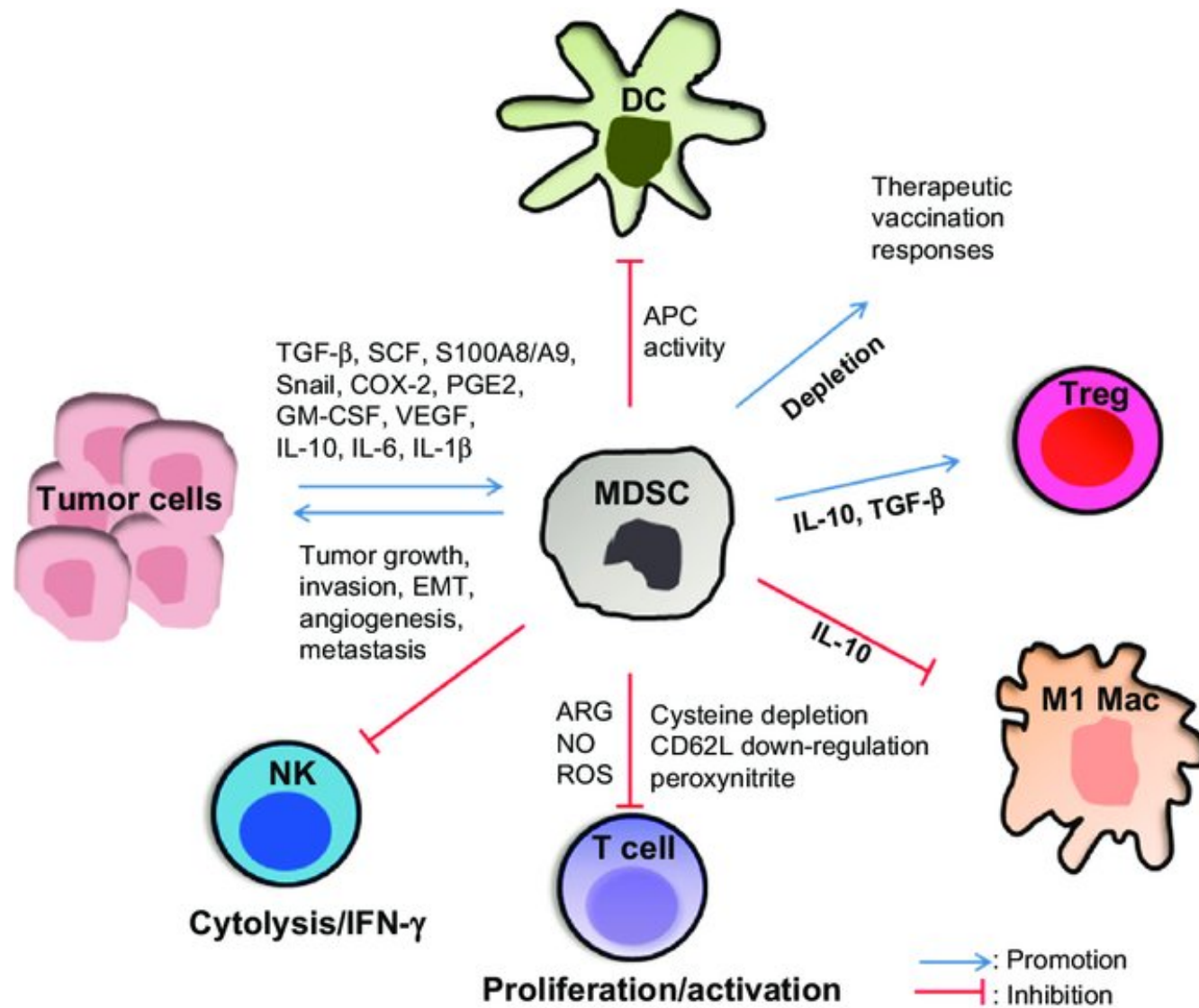
Laurén and World Health Organization classification

Laurén classification	World Health Organization classification
Intestinal type	Papillary adenocarcinoma
	Tubular adenocarcinoma
	Mucinous adenocarcinoma
Diffuse type	Signet-ring cell carcinoma and other poorly cohesive carcinomas
Indeterminate type	Mixed carcinoma
	Adenosquamous Carcinoma
	Squamous cell carcinoma
	Hepatoid adenocarcinoma
	Carcinoma with lymphoid stroma
	Choriocarcinoma
	Carcinosarcoma
	Parietal cell carcinoma
	Malignant rhabdoid tumor
	Mucoepidermoid carcinoma
	Paneth cell carcinoma
	Undifferentiated carcinoma
	Mixed adeno-neuroendocrine carcinoma
	Endodermal sinus tumor
	Embryonal carcinoma
Pure gastric yolk sac tumor	
Oncocytic adenocarcinoma	

DOI:10.1111/hel.12082

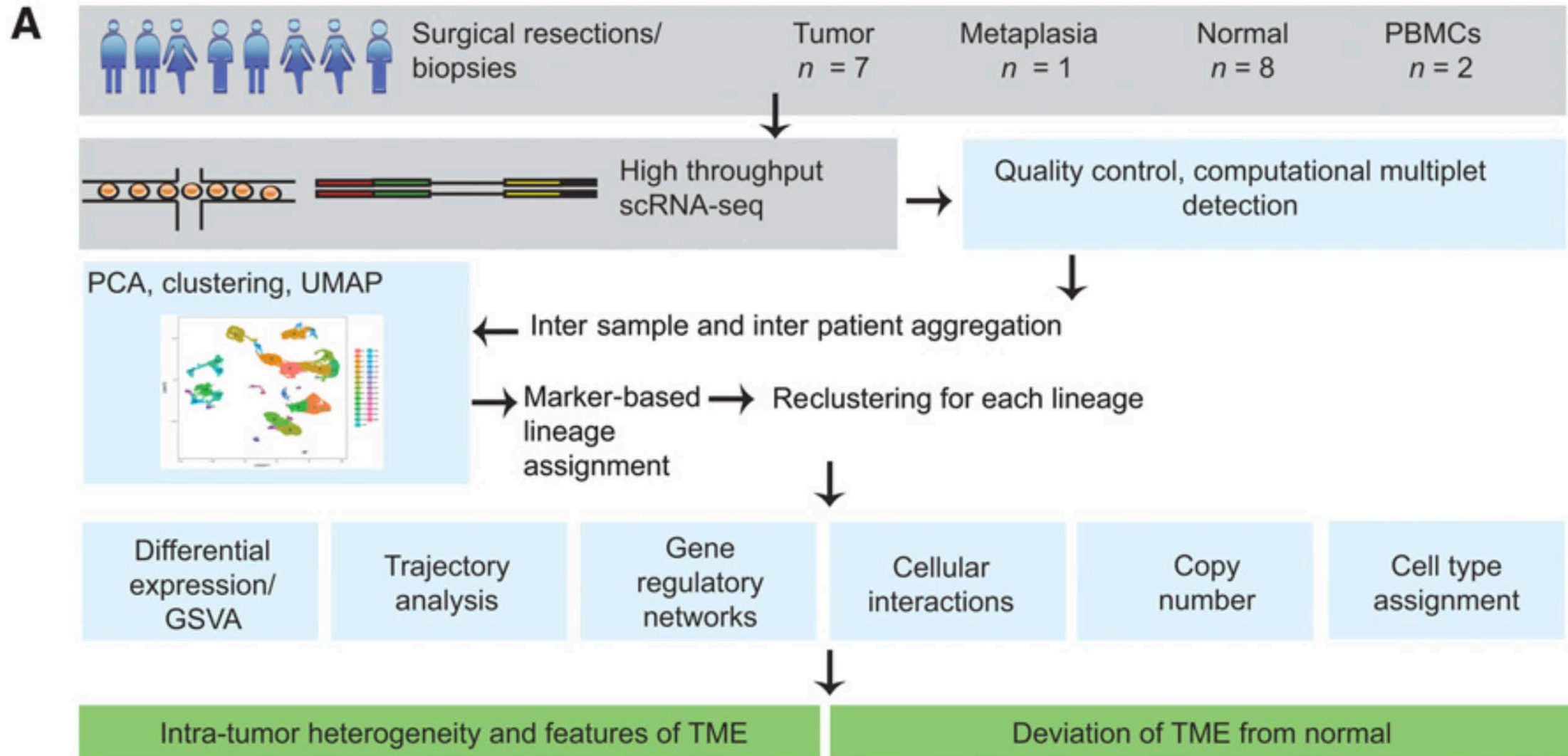
Cancer microenvironment



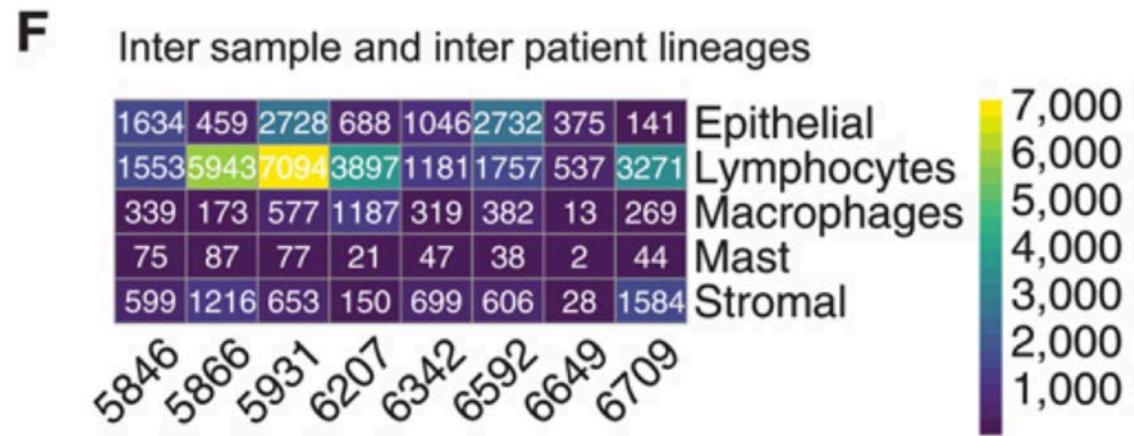
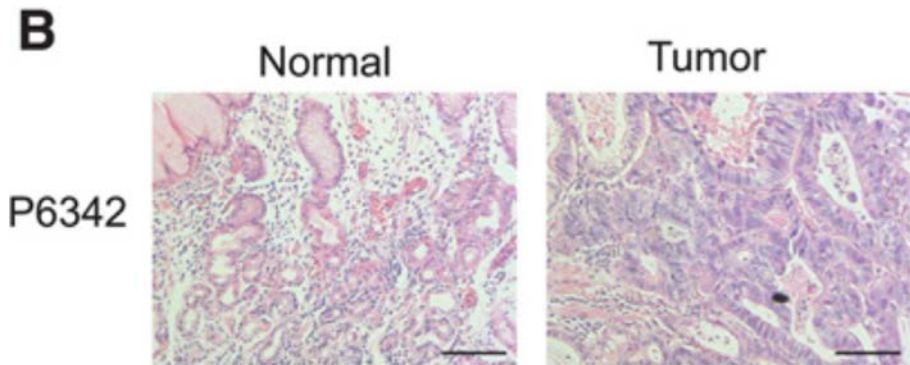
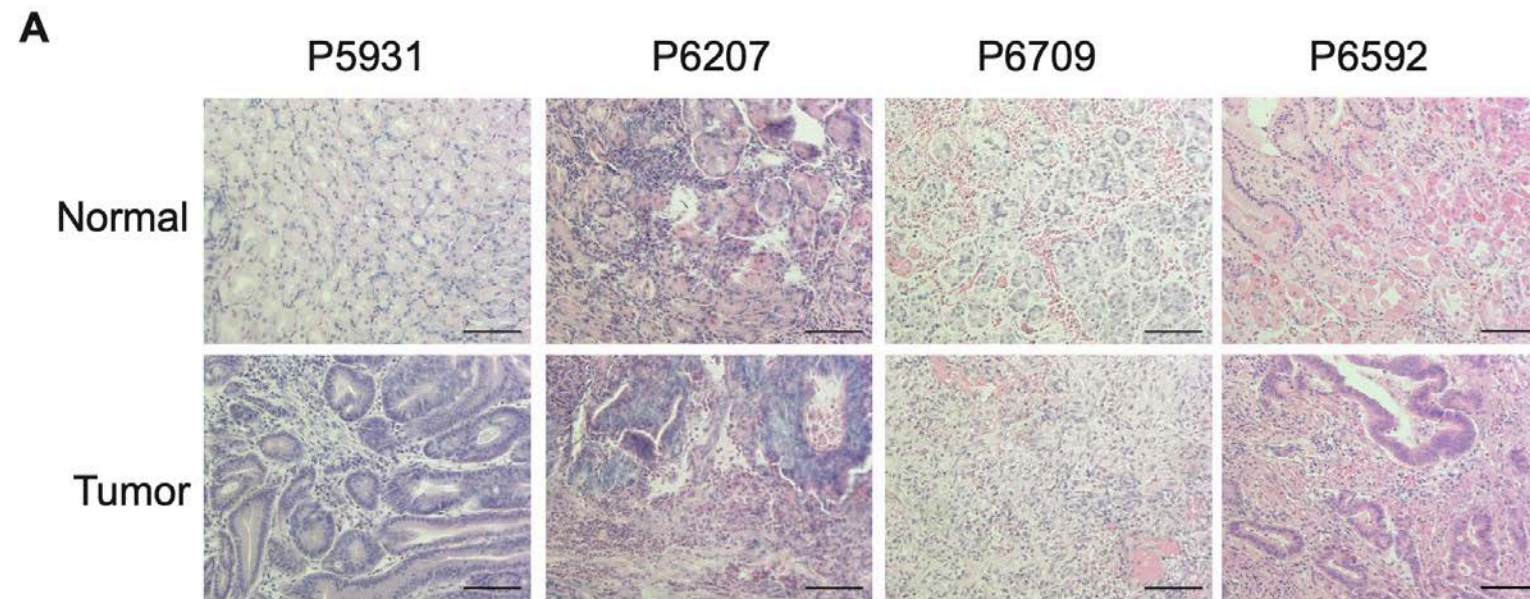


Targeting myeloid-derived suppressor cells augments antitumor activity against lung cancer; *ImmunoTargets and Therapy* 2012(1):7-12

Methods



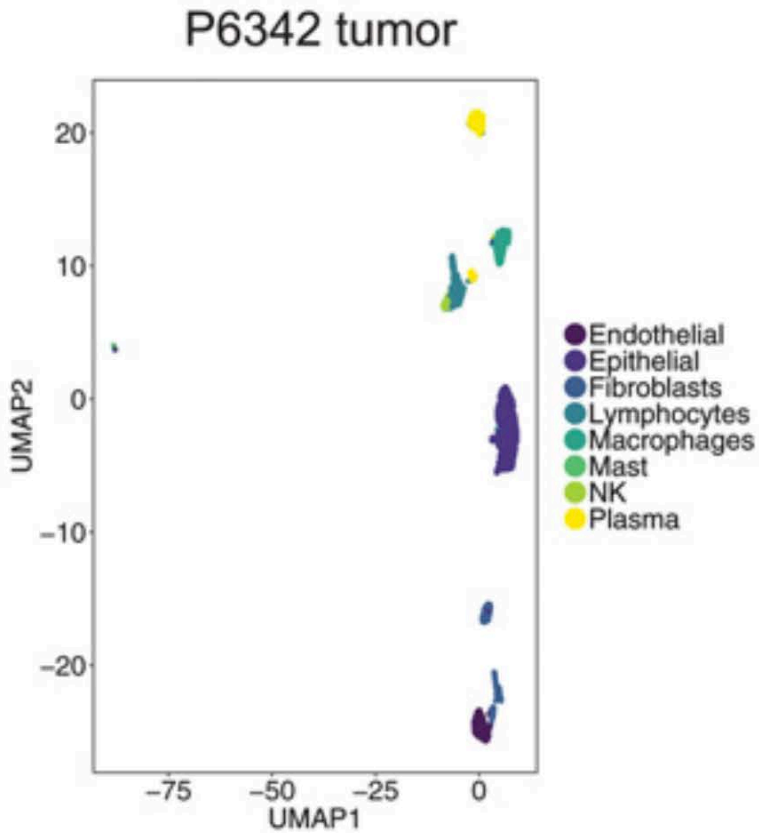
Results



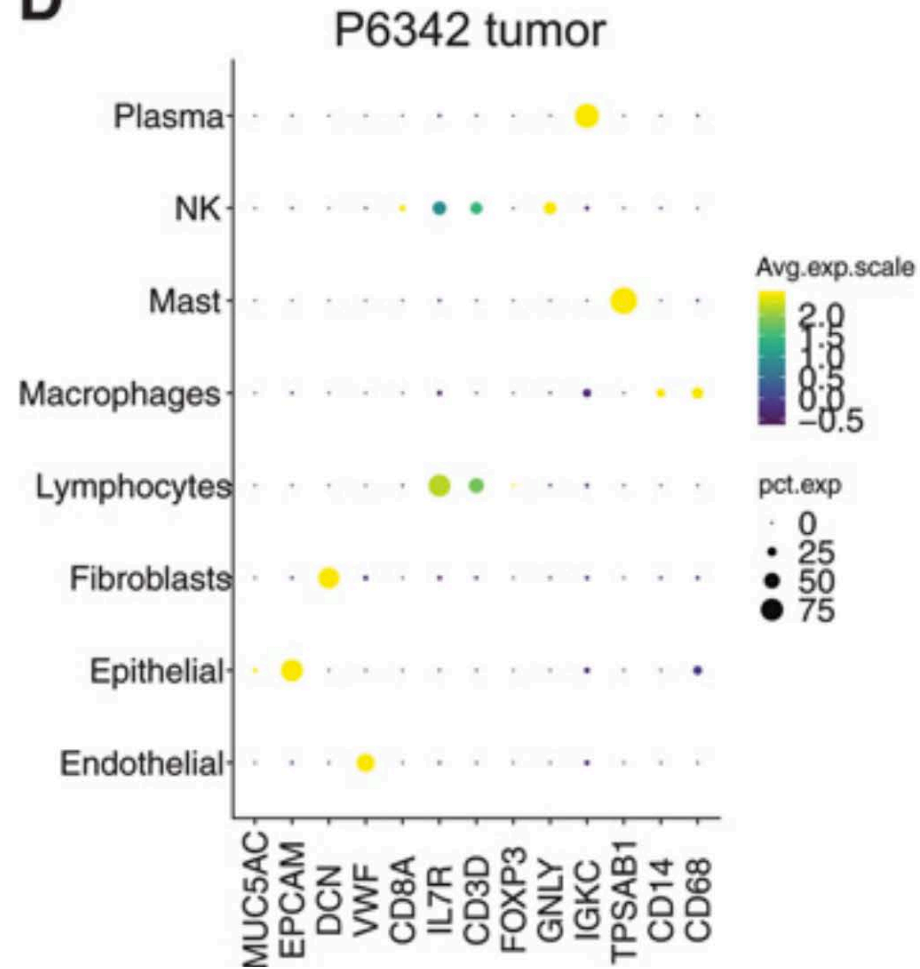
Results

Single-cell profiling of gastric cancer

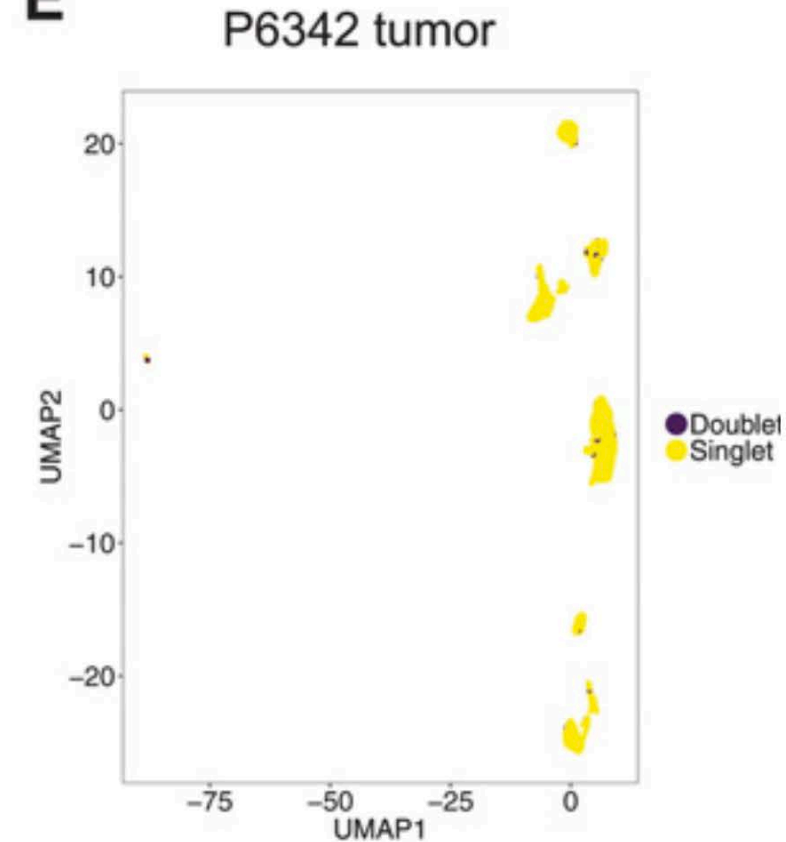
C



D

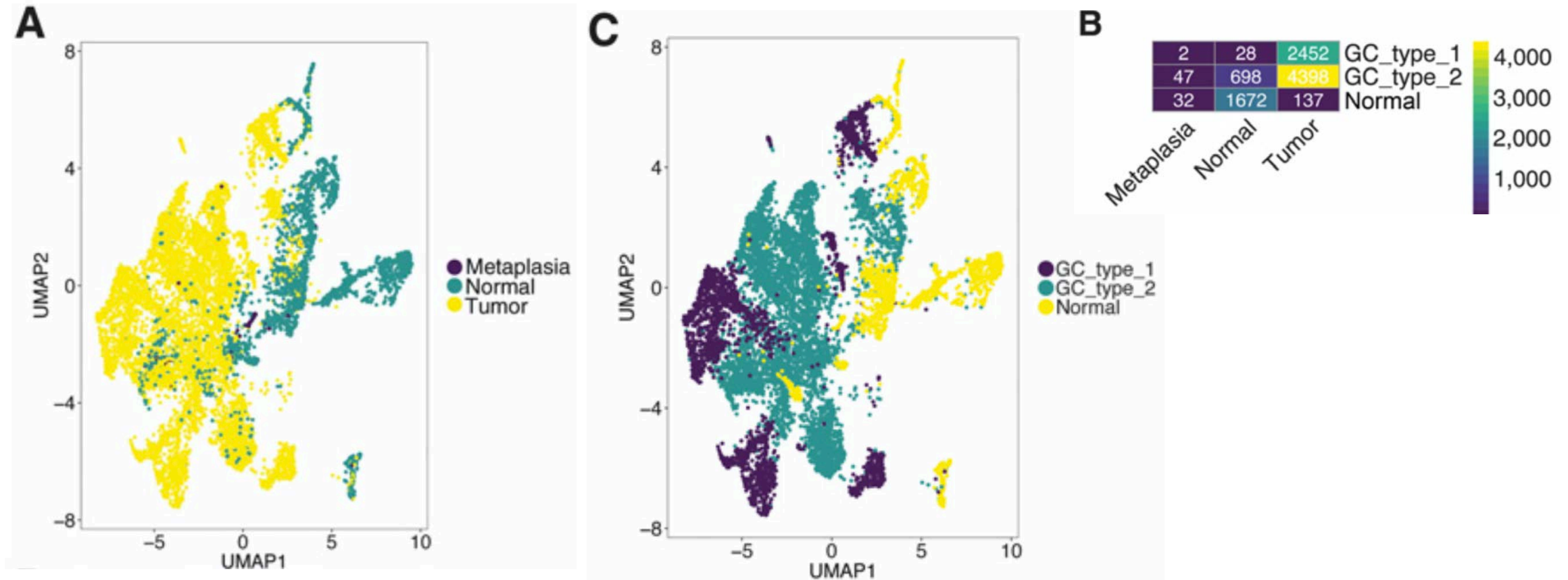


E

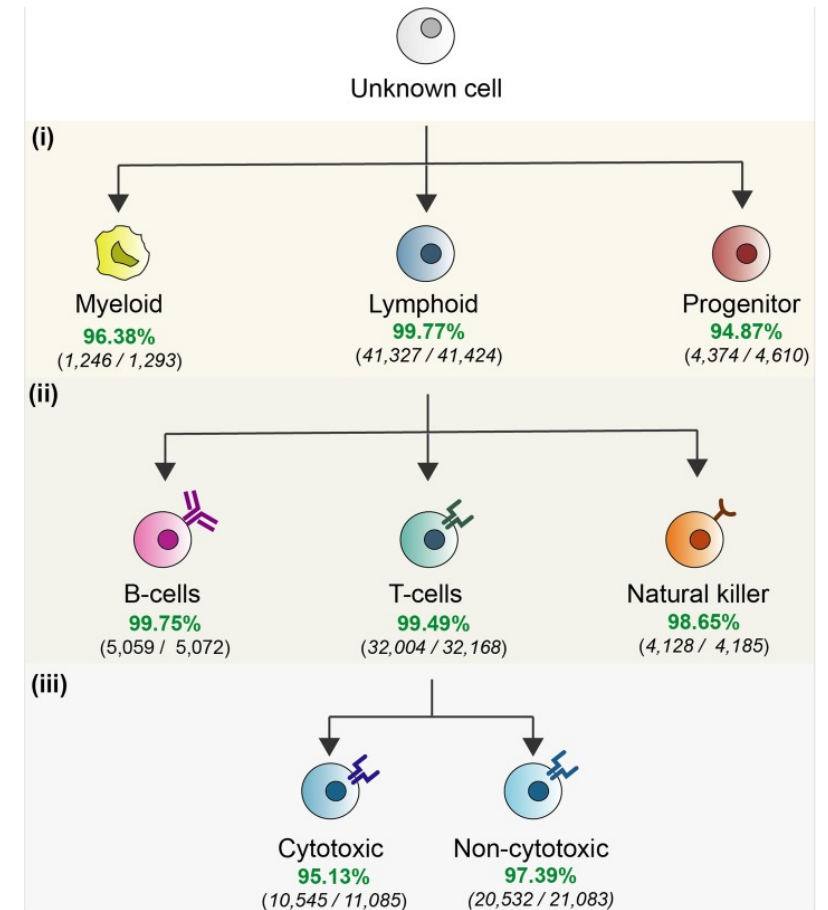
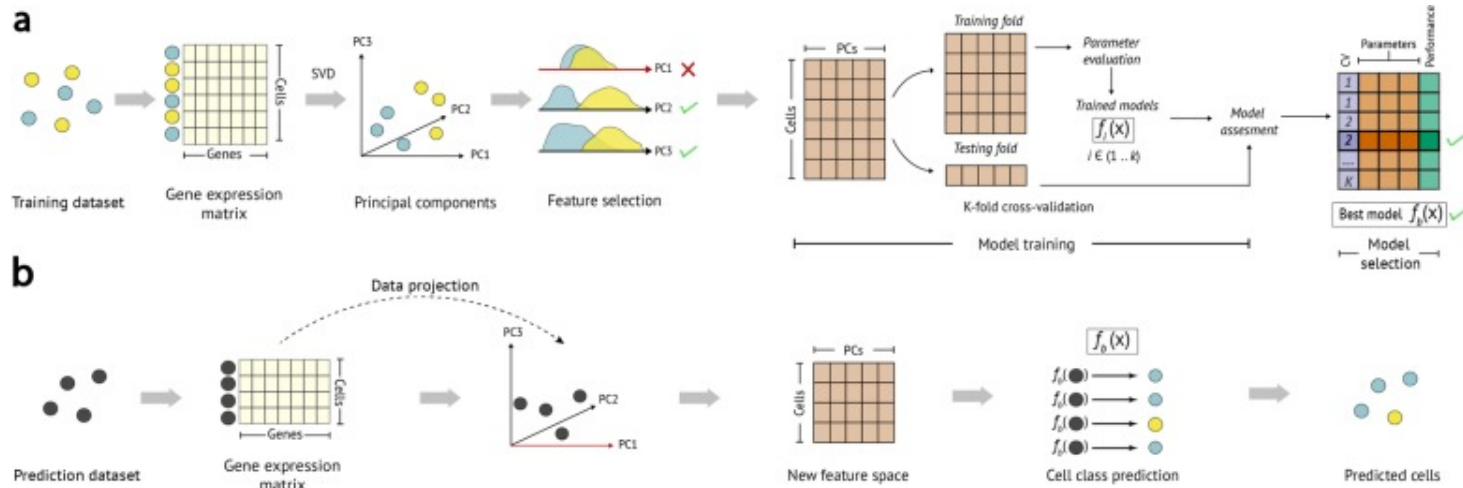


Results

Epithelial cells

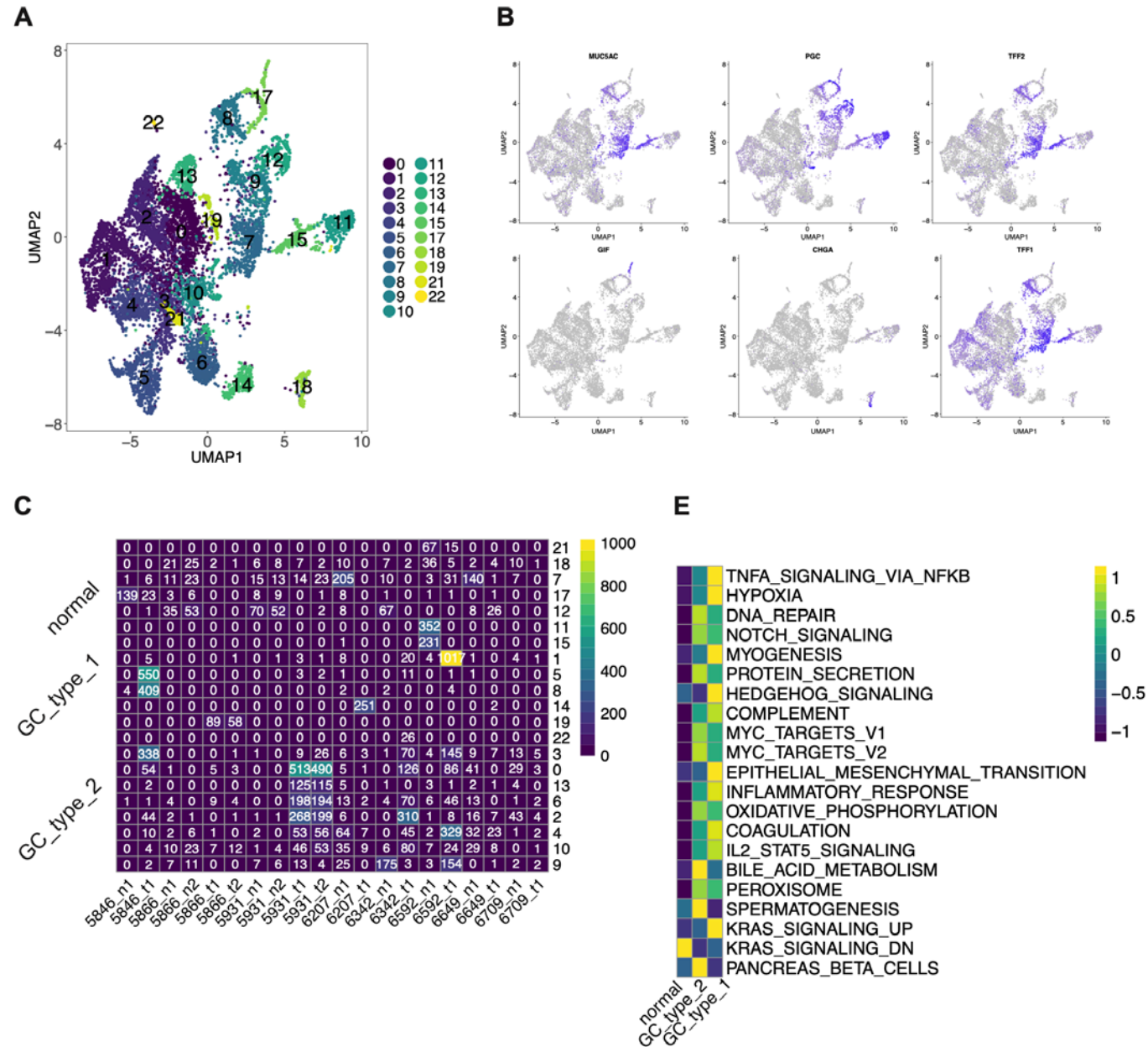


scPred

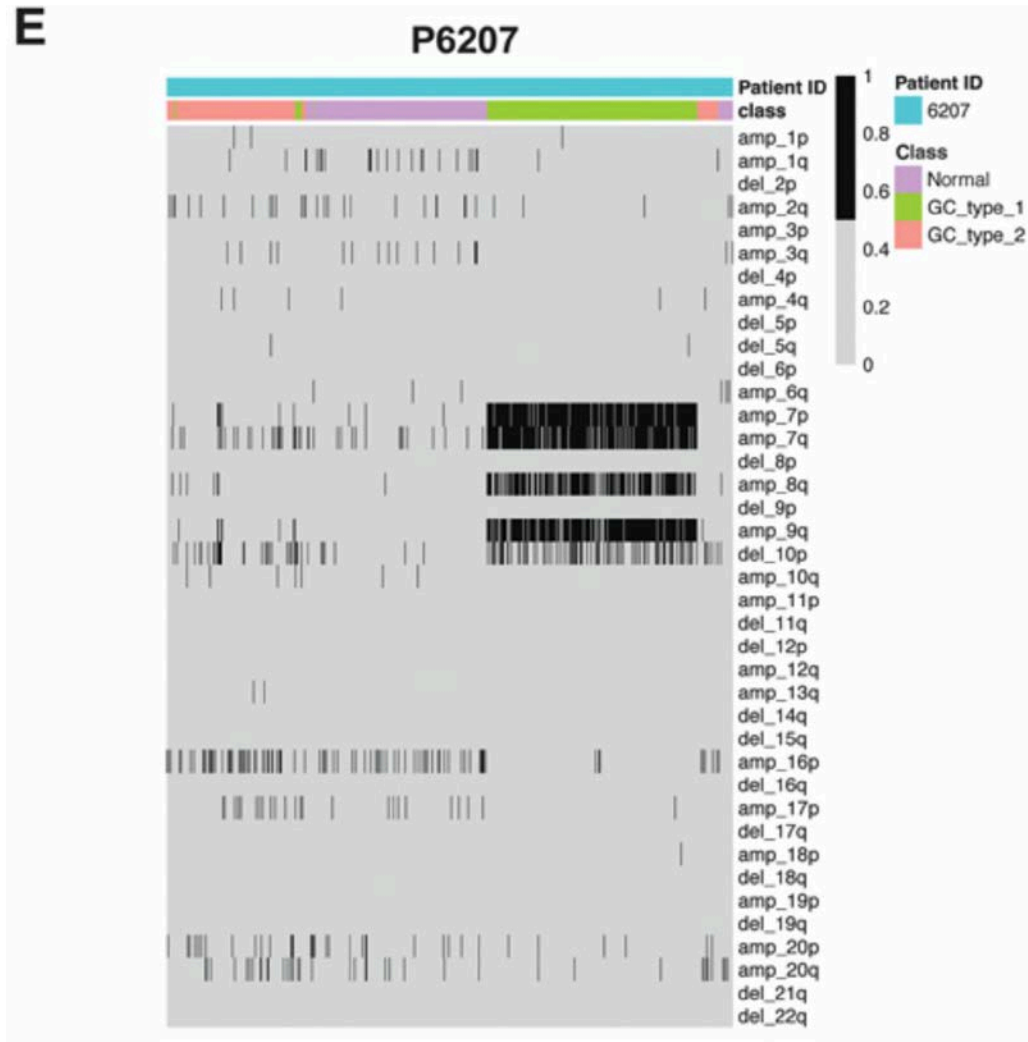


scPred: accurate supervised method for cell-type classification from single-cell RNA-seq data; Jose Alquicira-Hernandez et al.

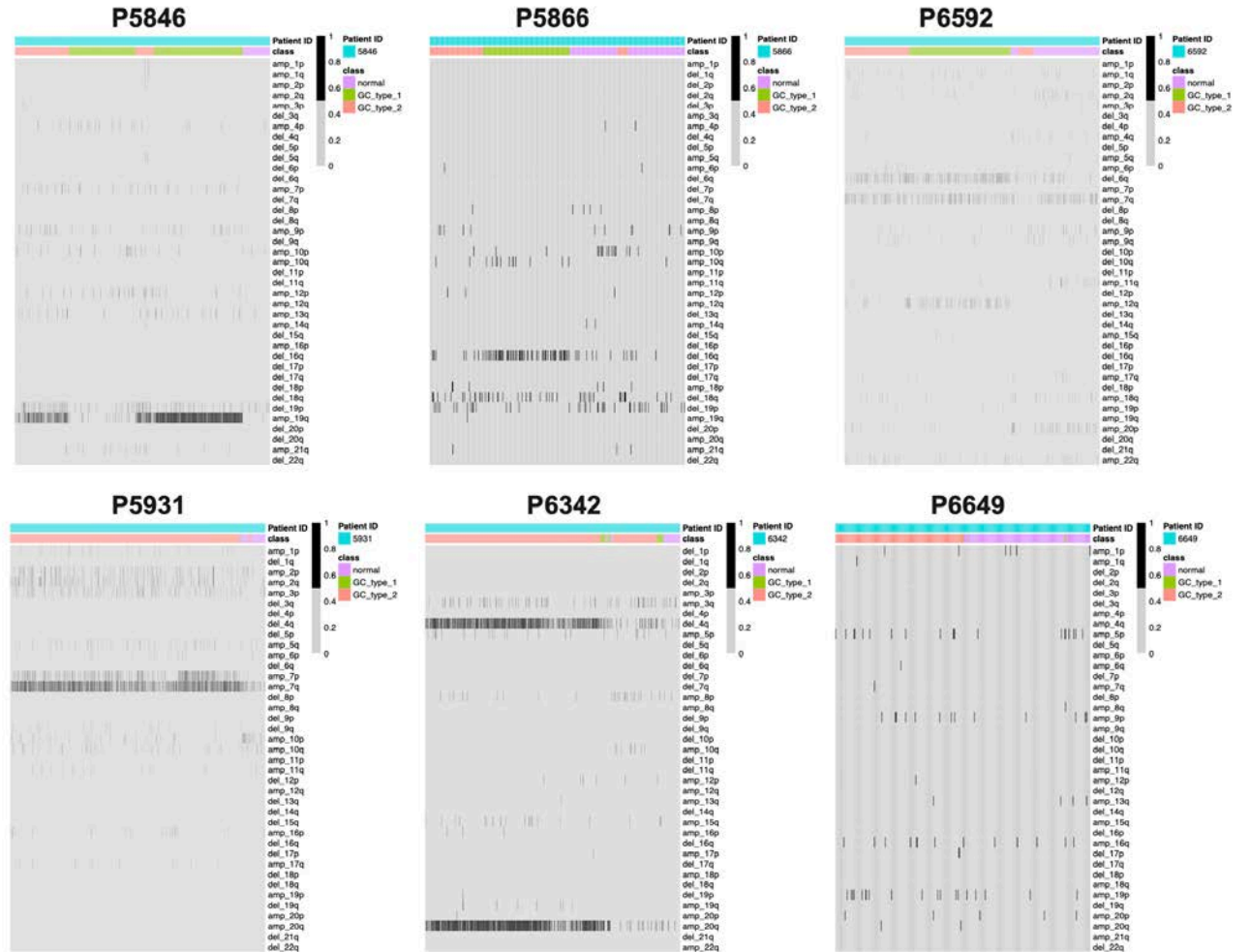
Results



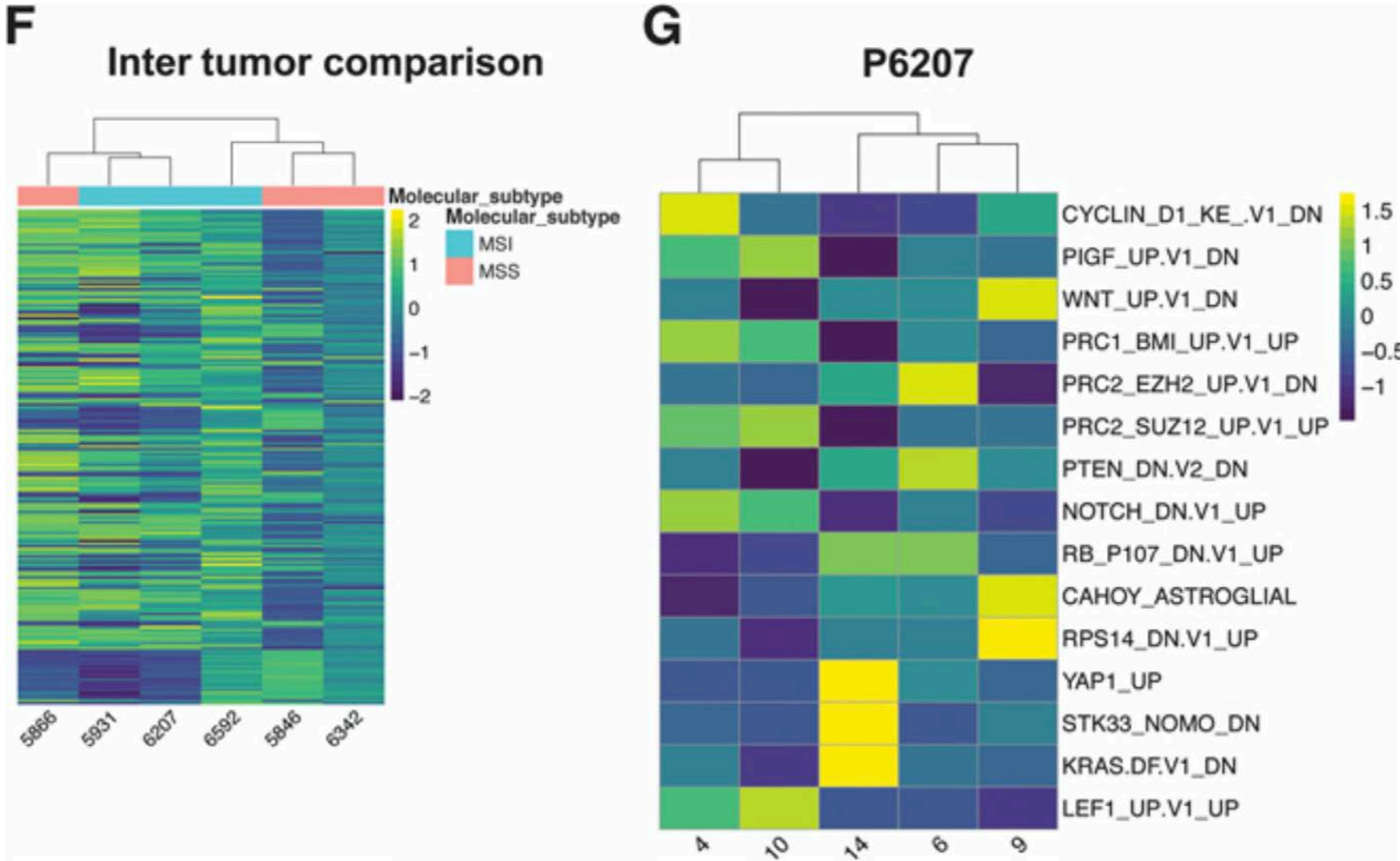
Results



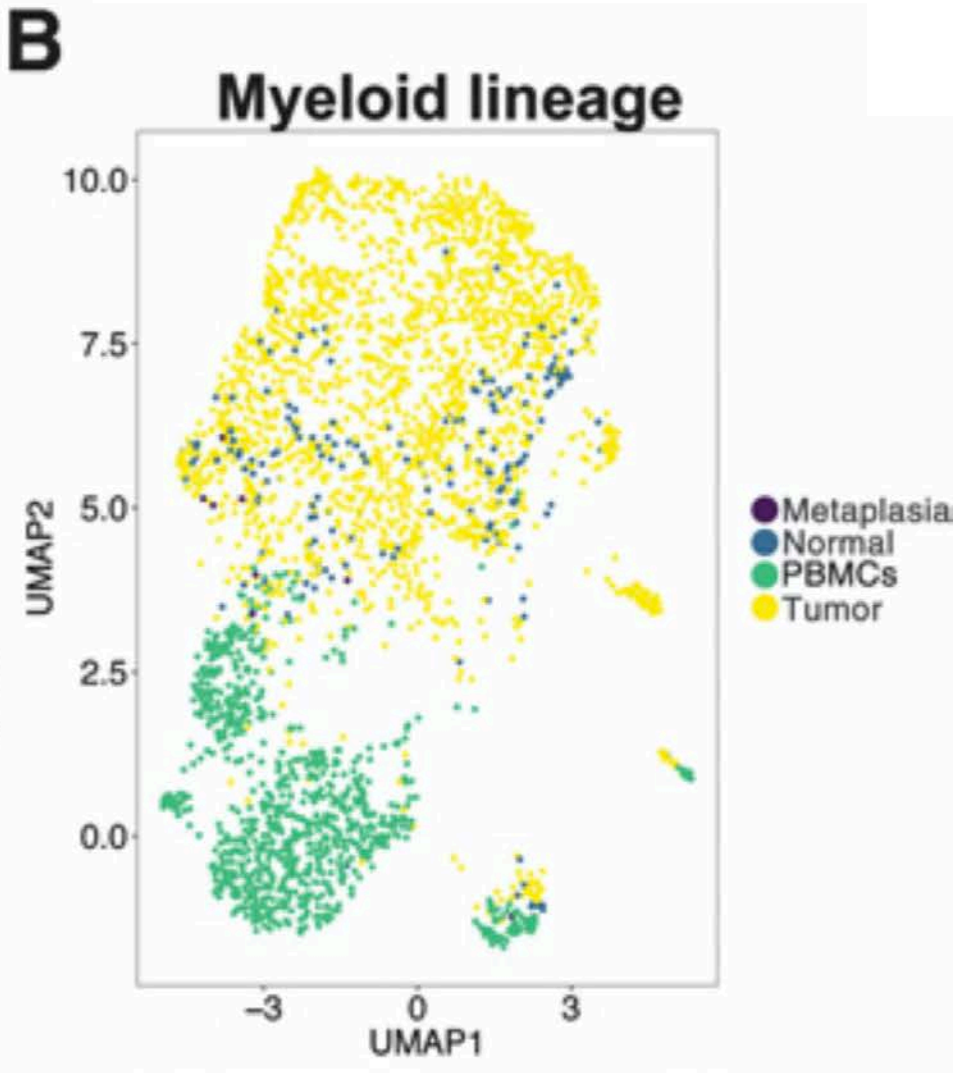
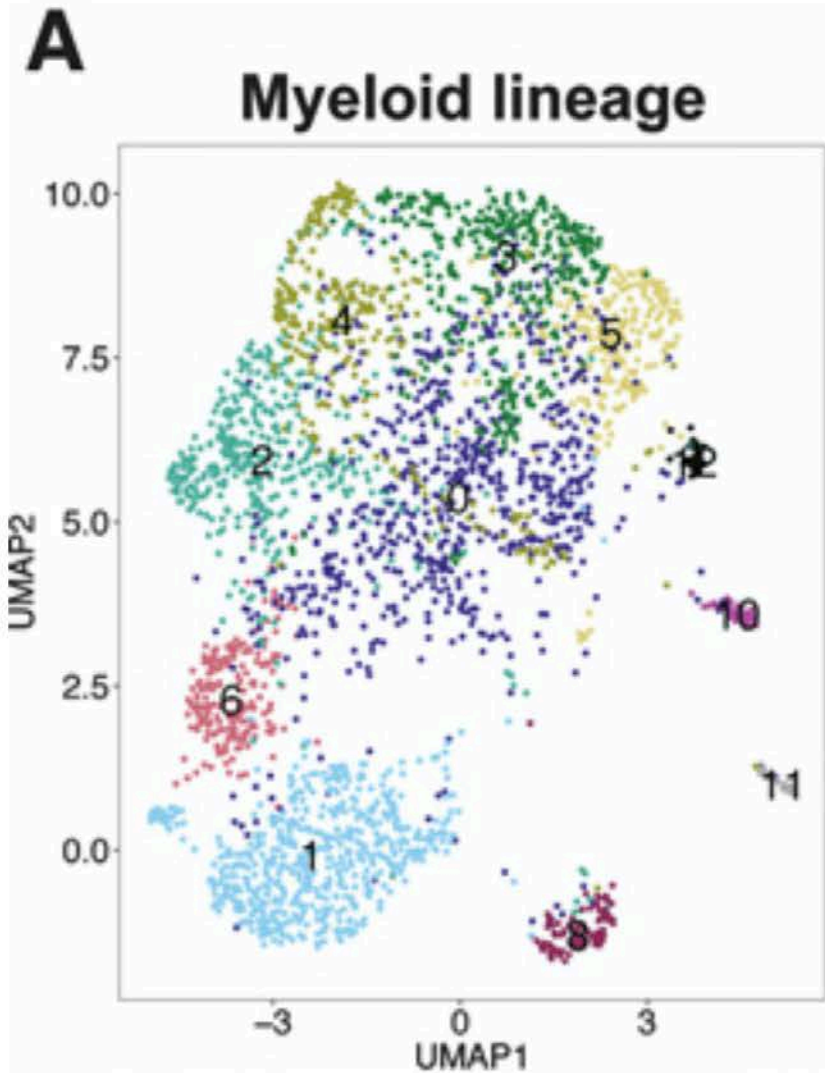
A



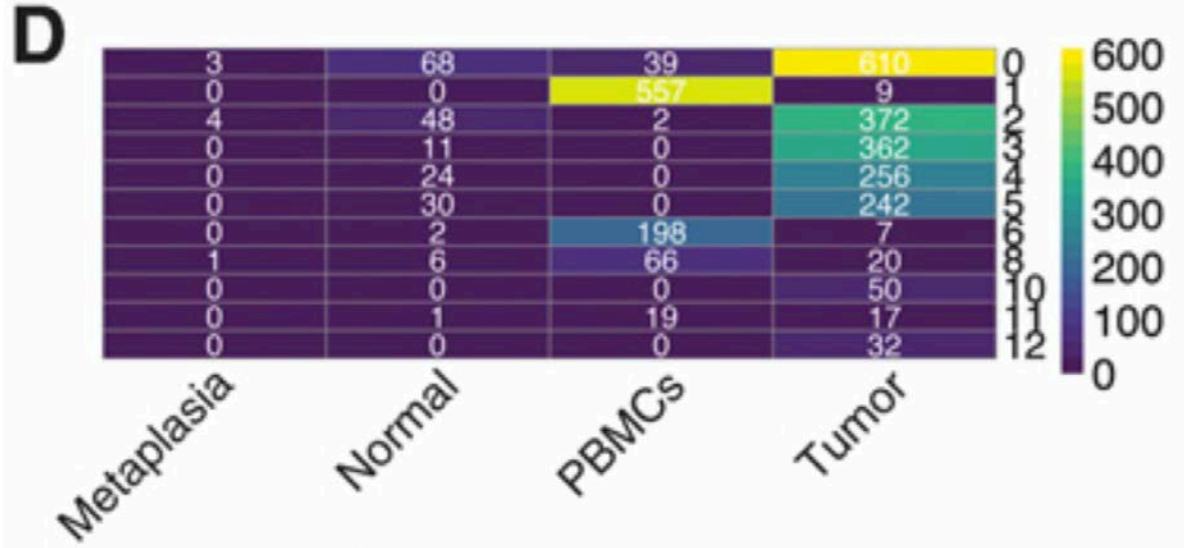
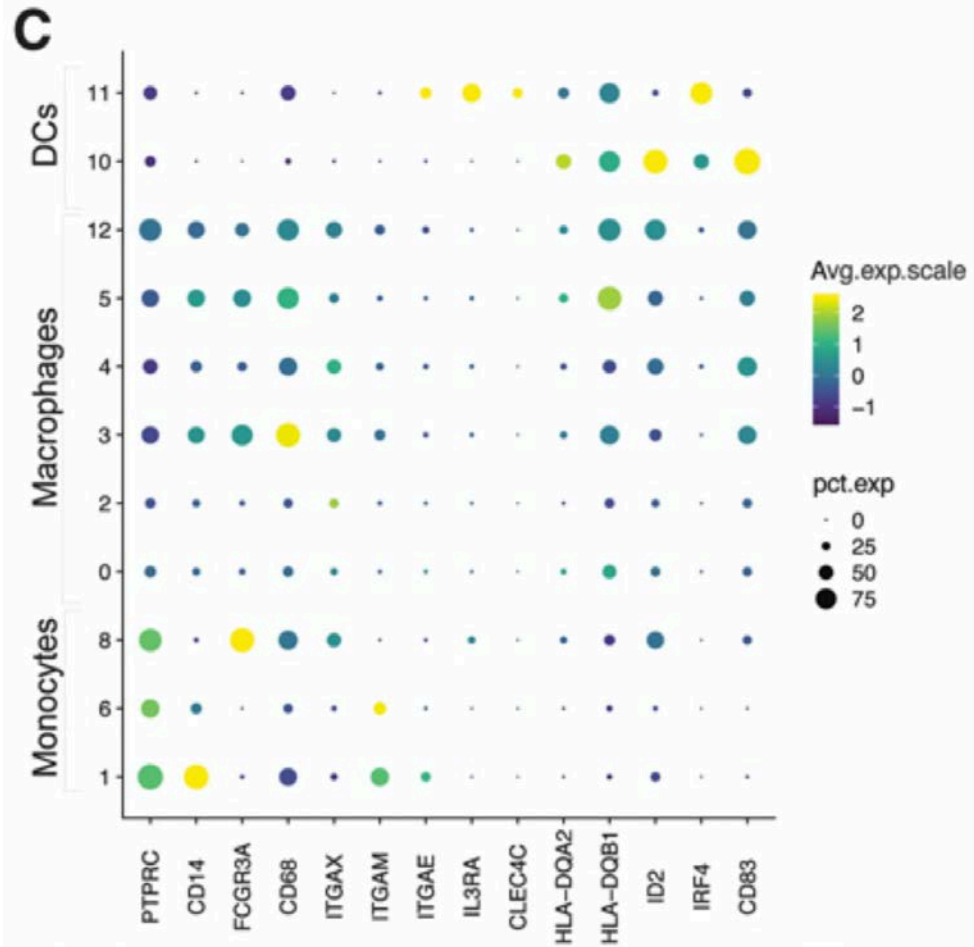
Results



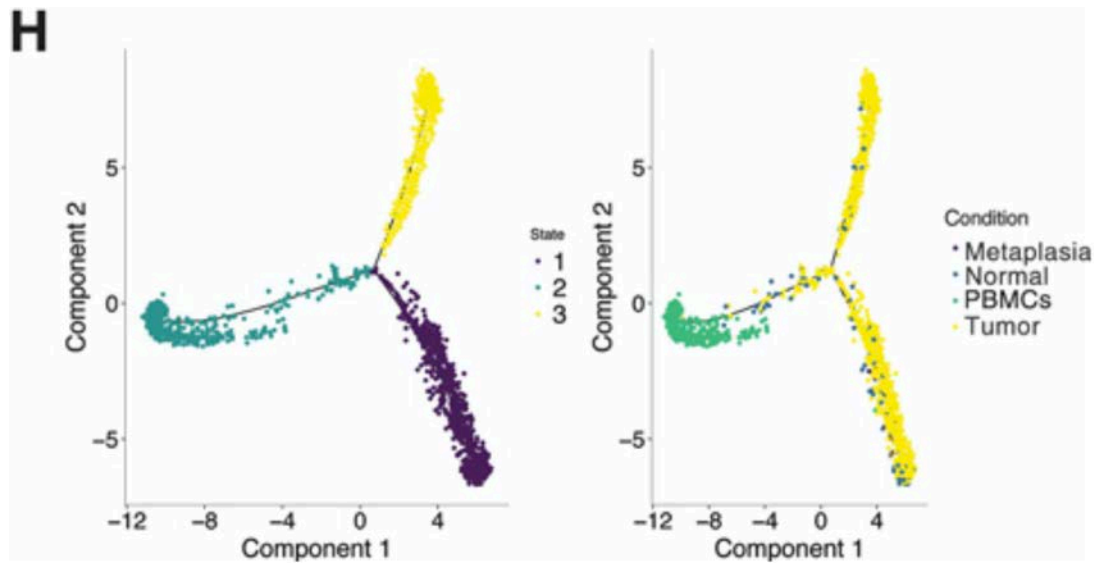
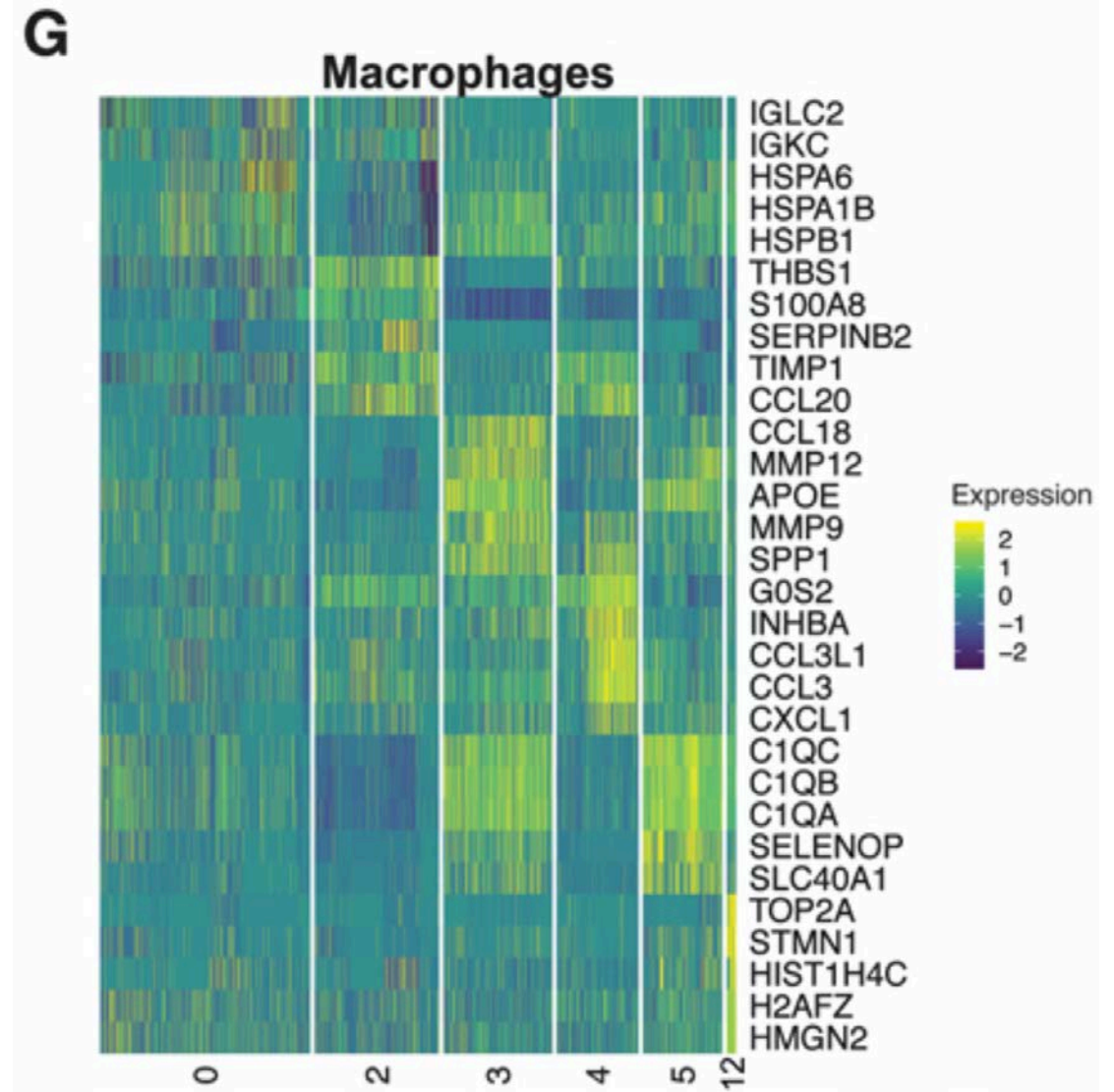
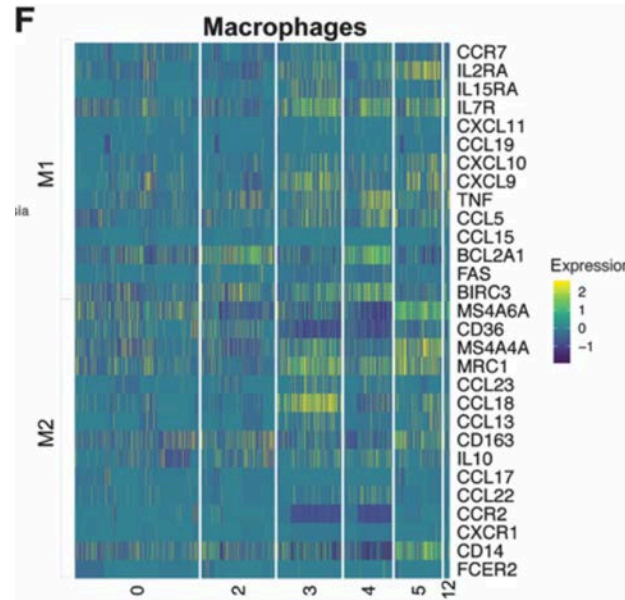
Results



Results

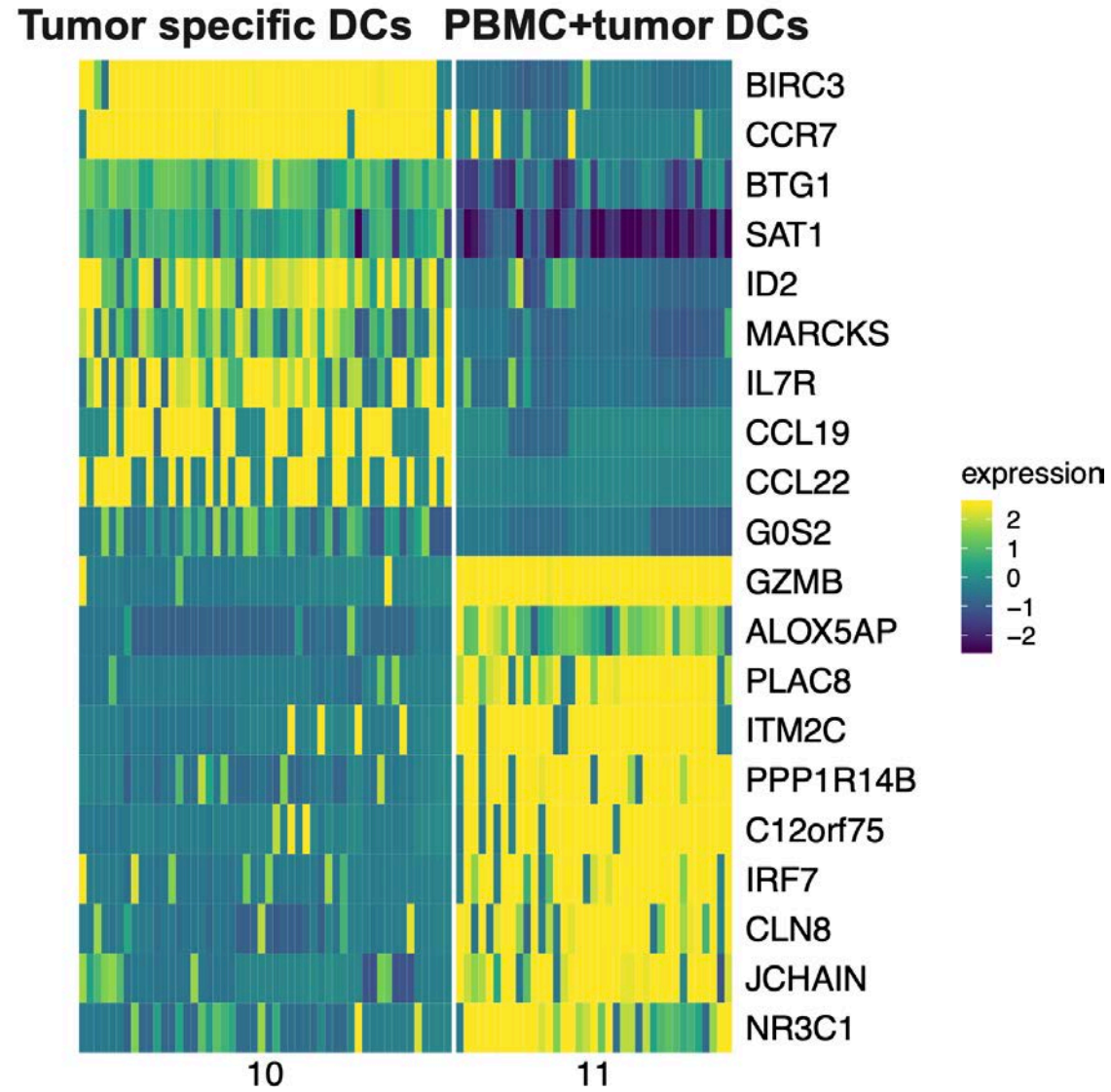


Results

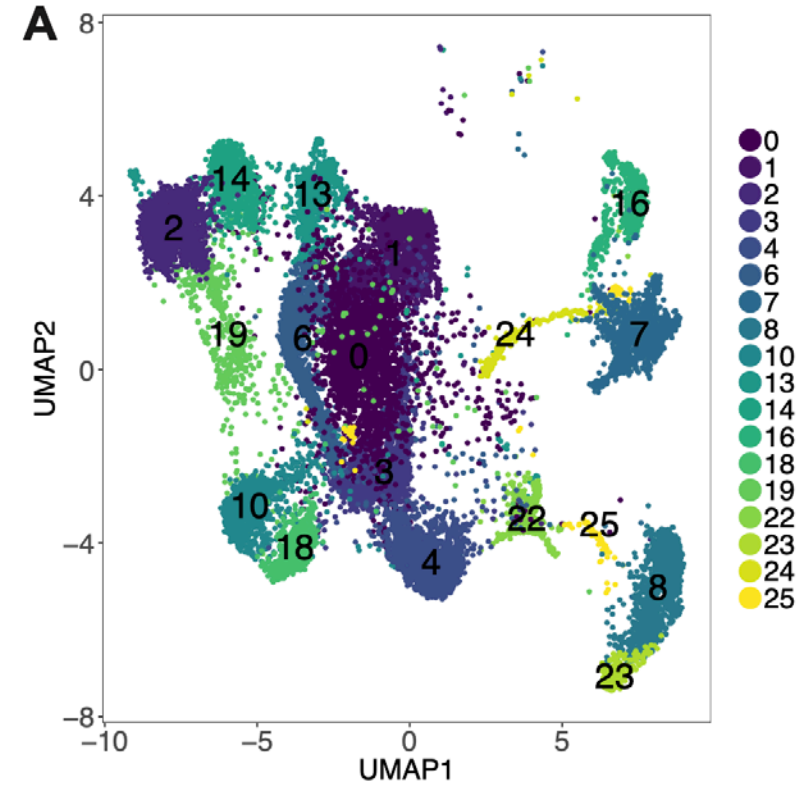
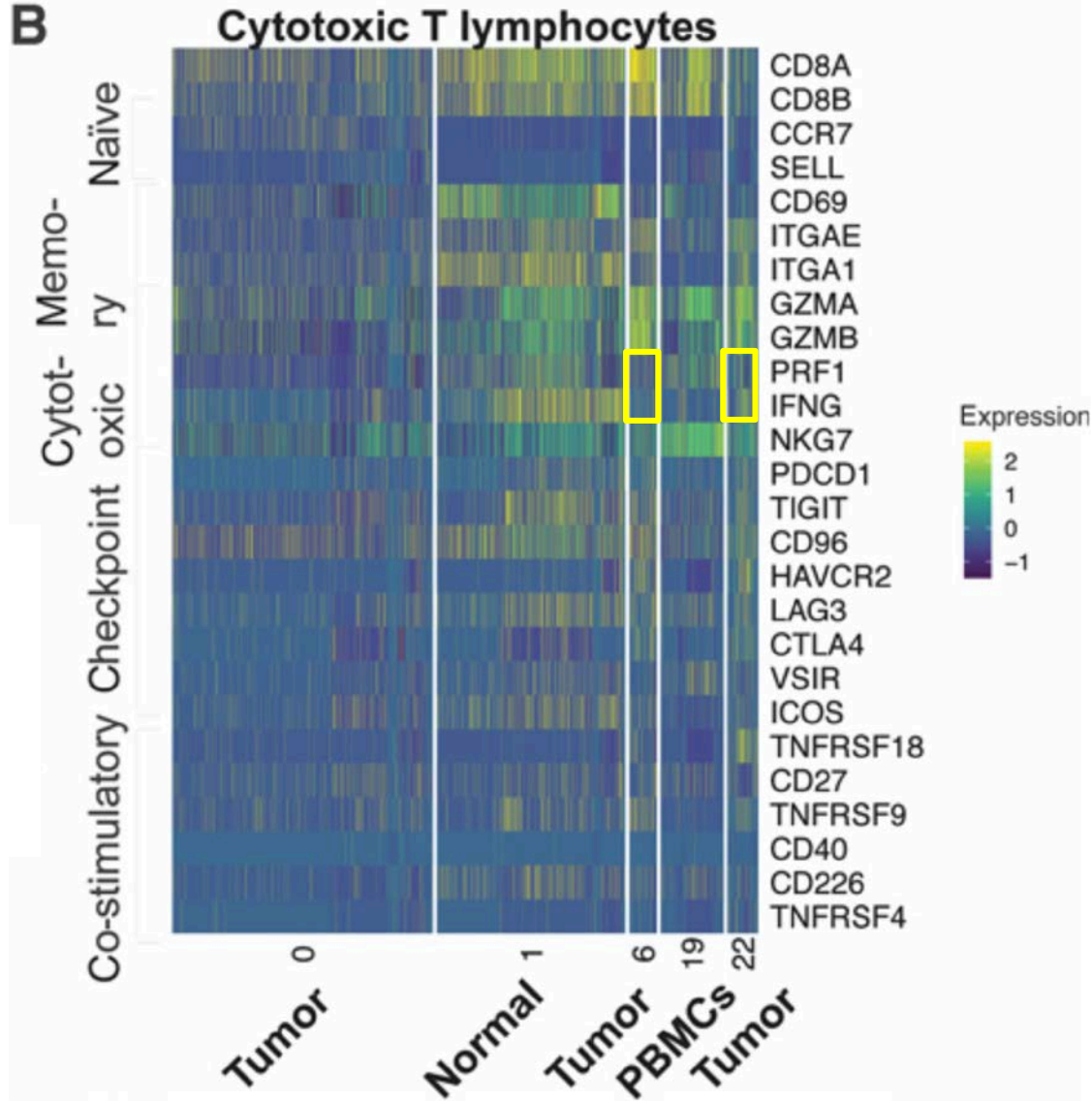


Results

C



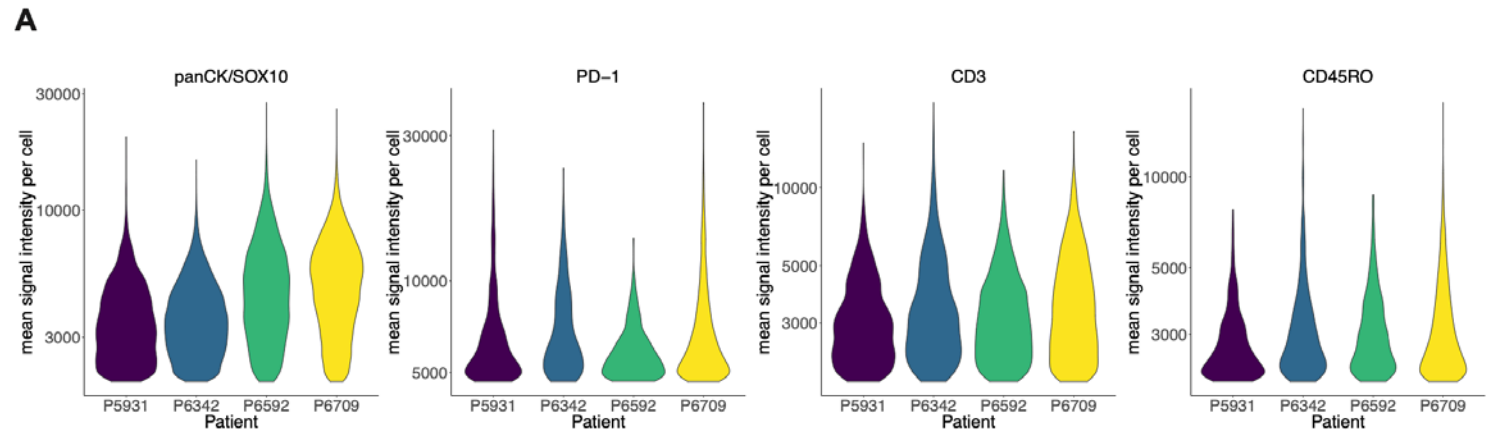
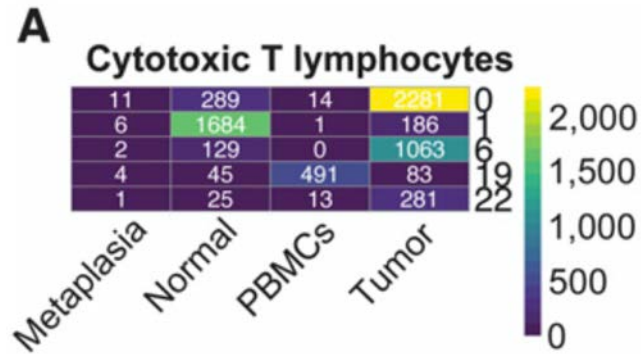
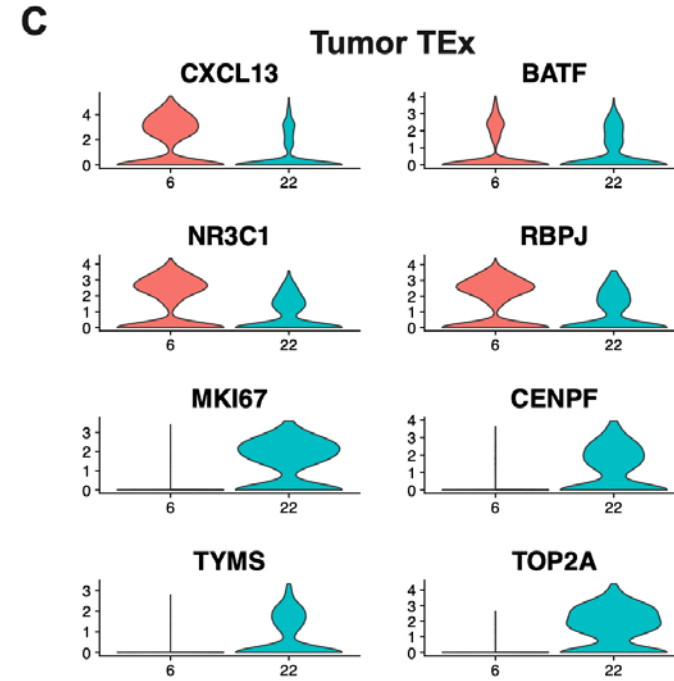
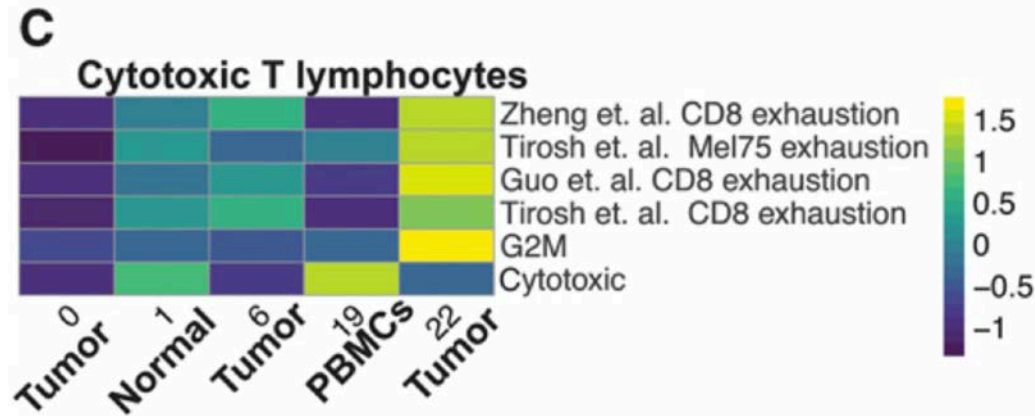
Results



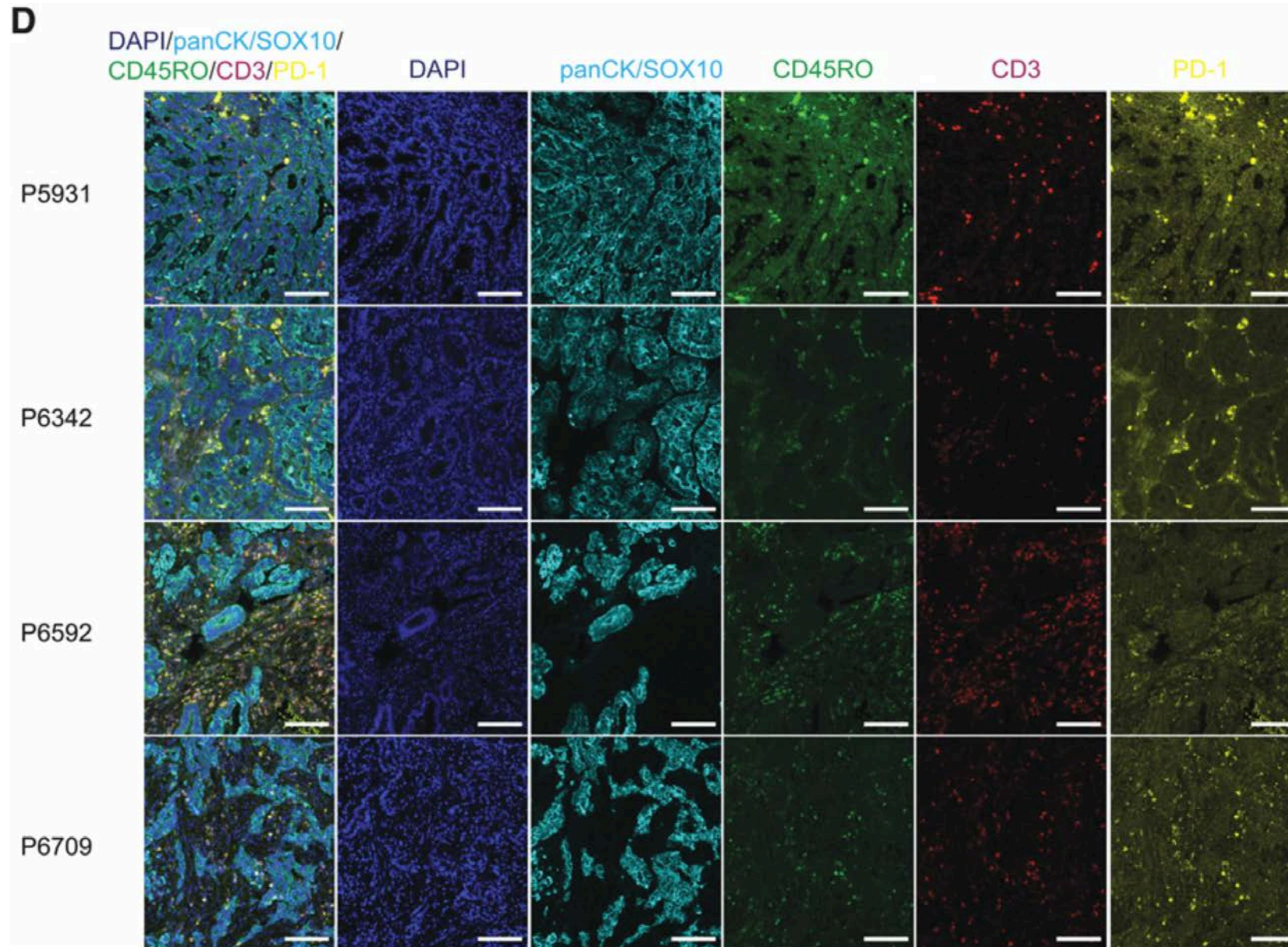
B

Cell type	Cluster number
CD8	0,1,6,19,22
CD4	3,6,10,18
NK	2,13,14
B	8,22,23
Plasma	7,16,24,25
Treg	4,22

Results

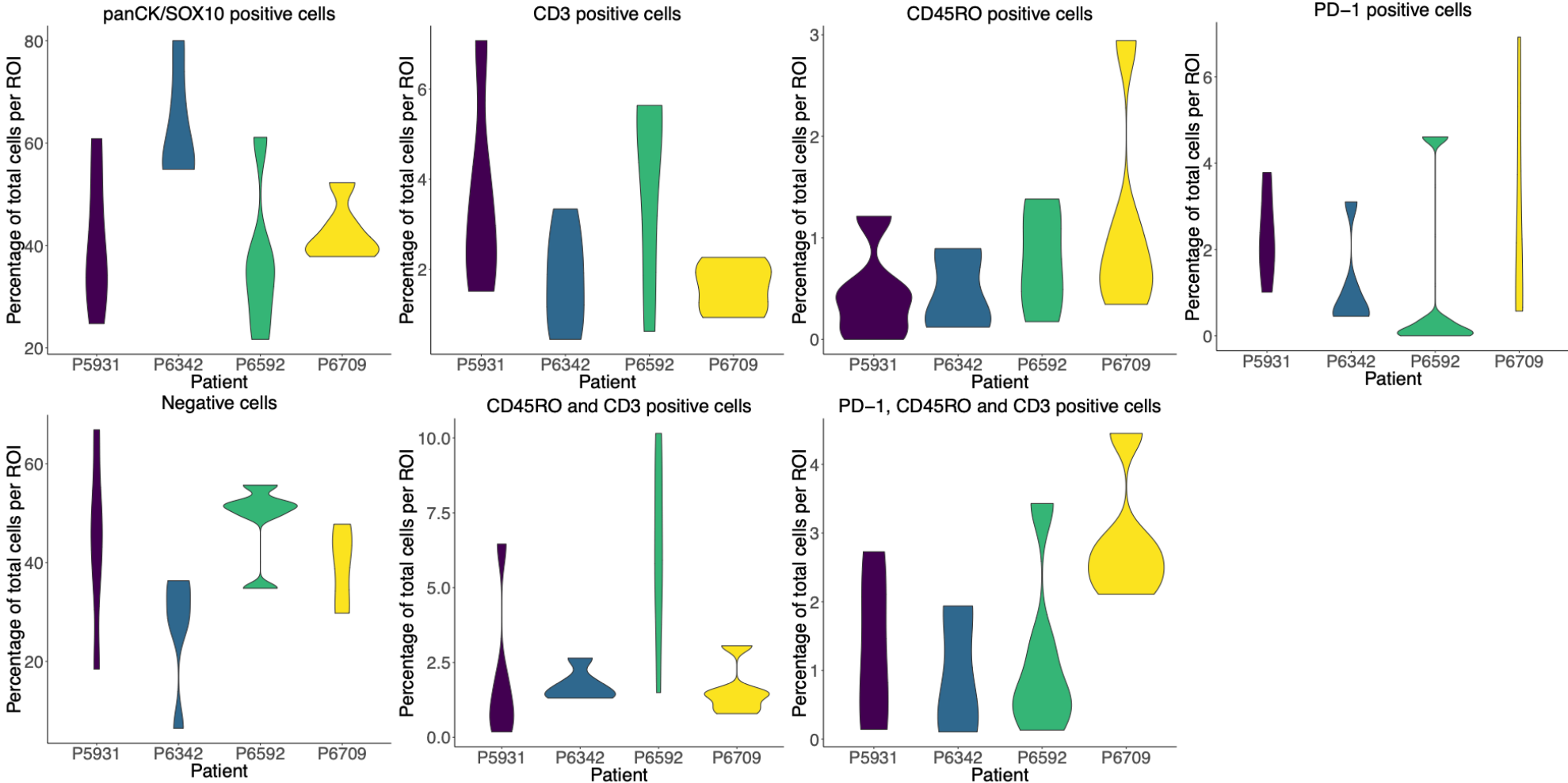


Results

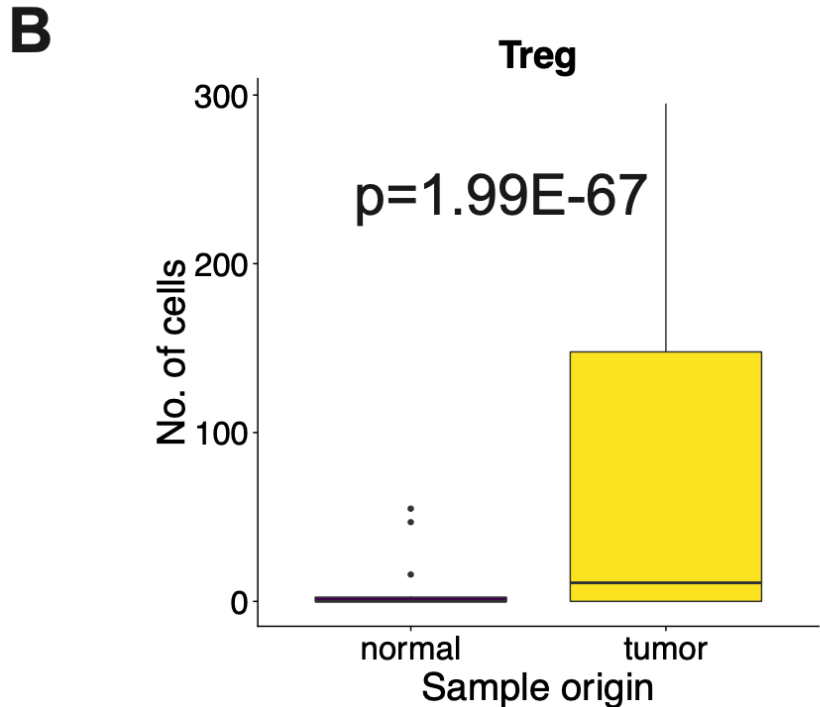
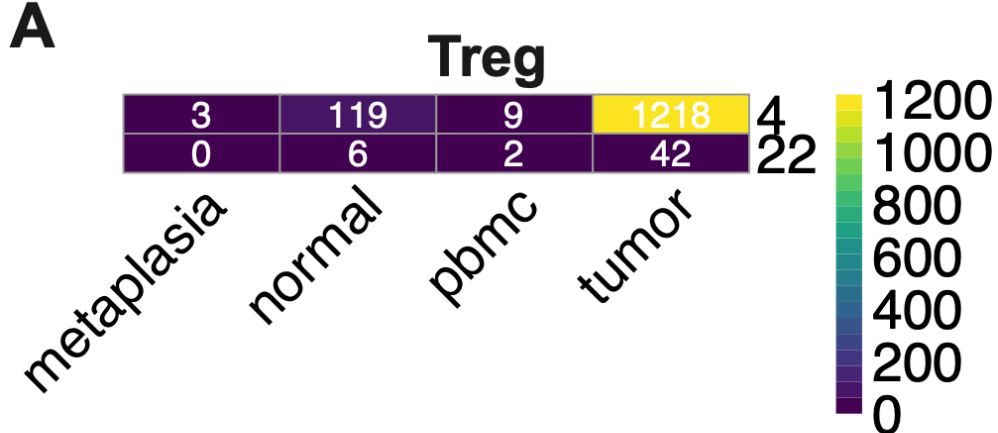
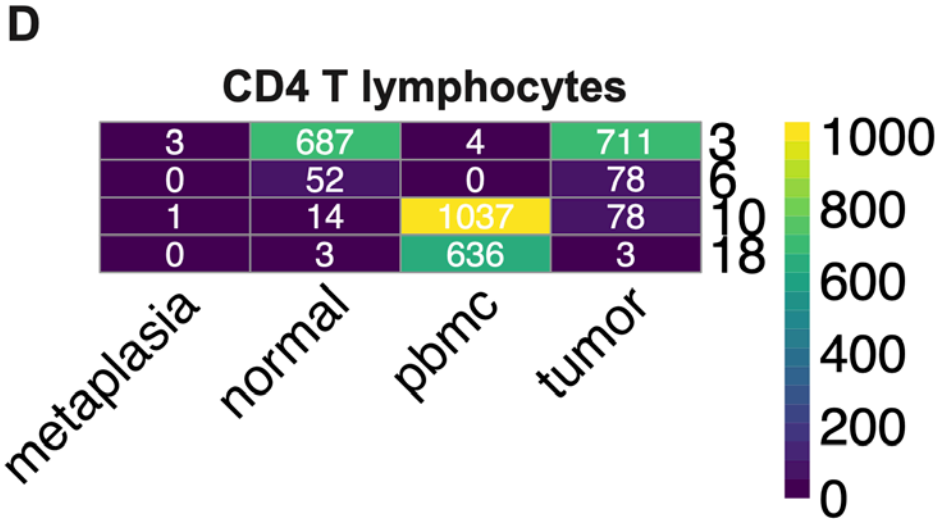


Results

B

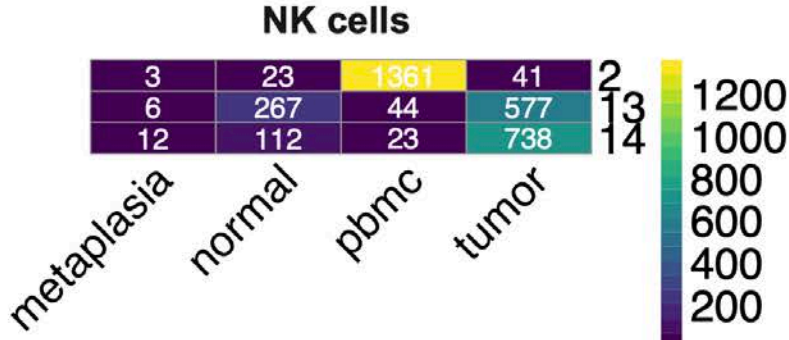


Results

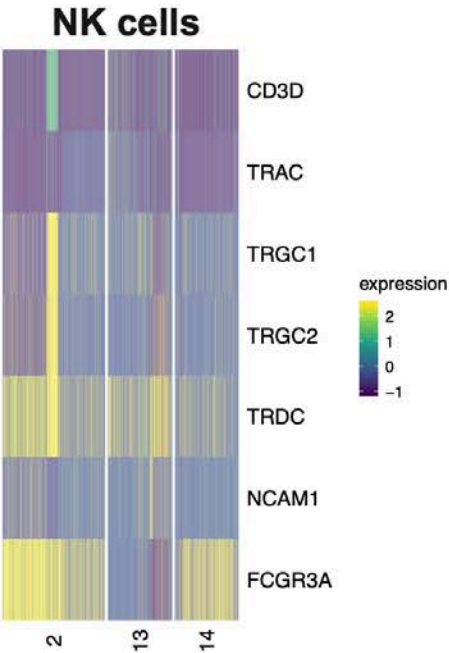


Results

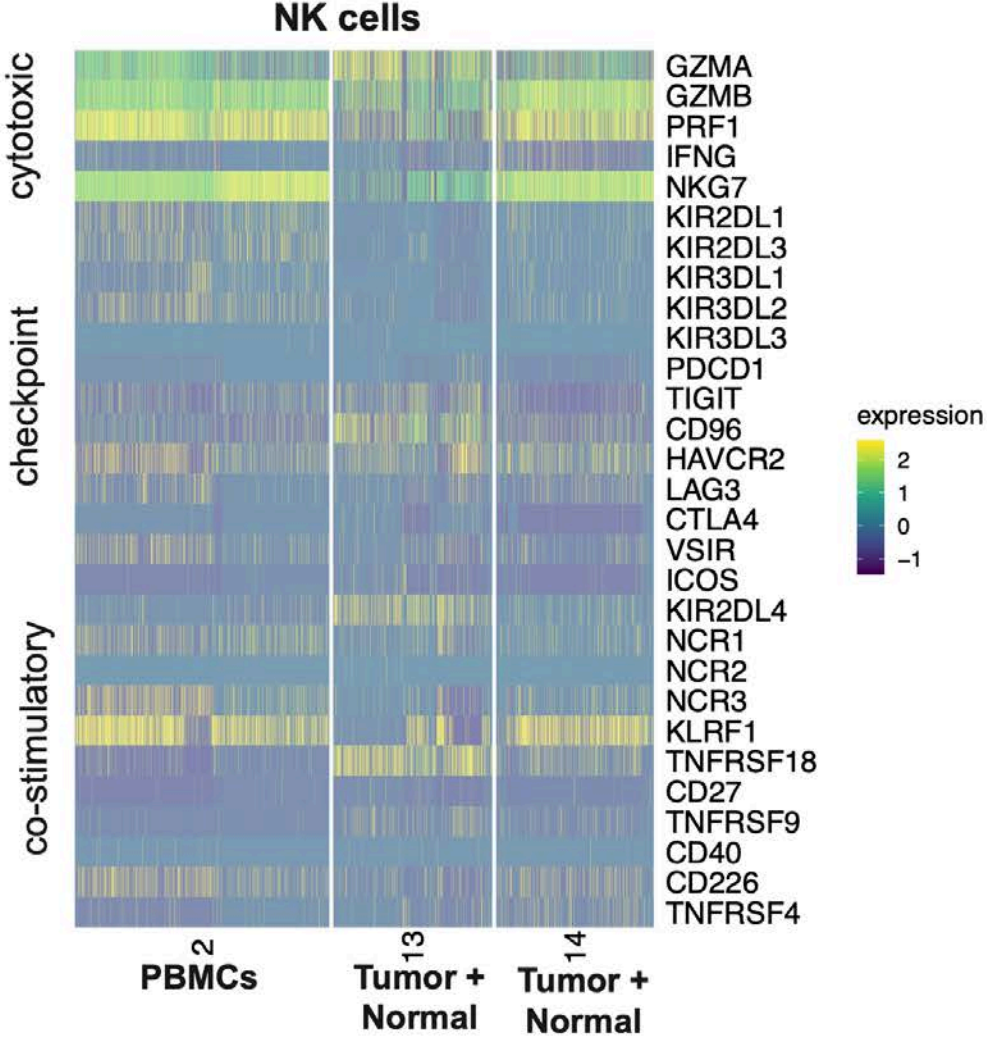
A



B

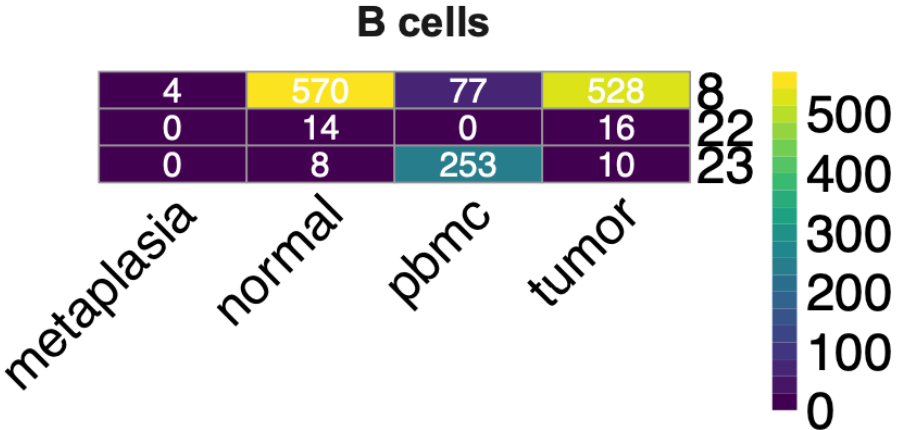


C

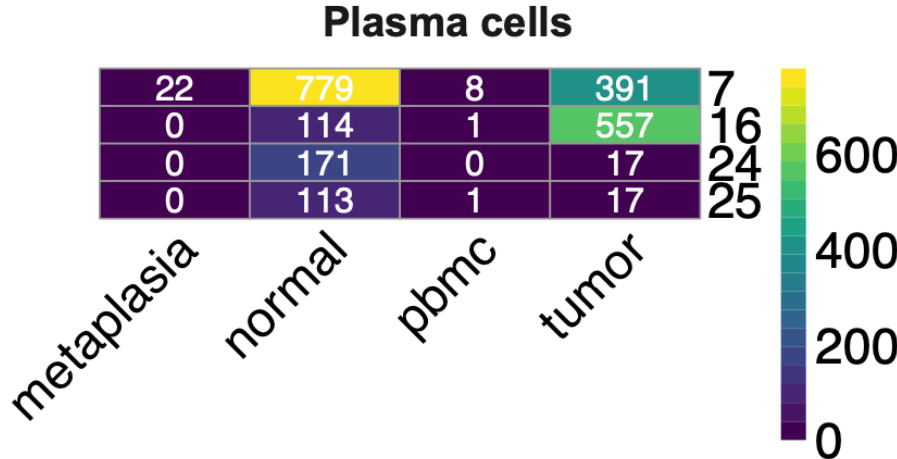


Results

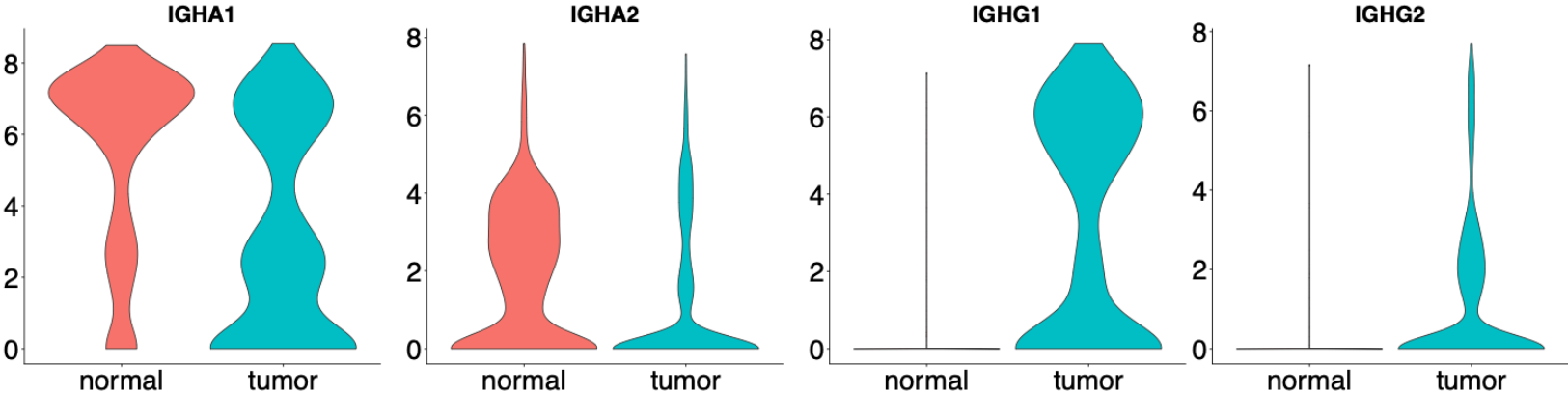
D



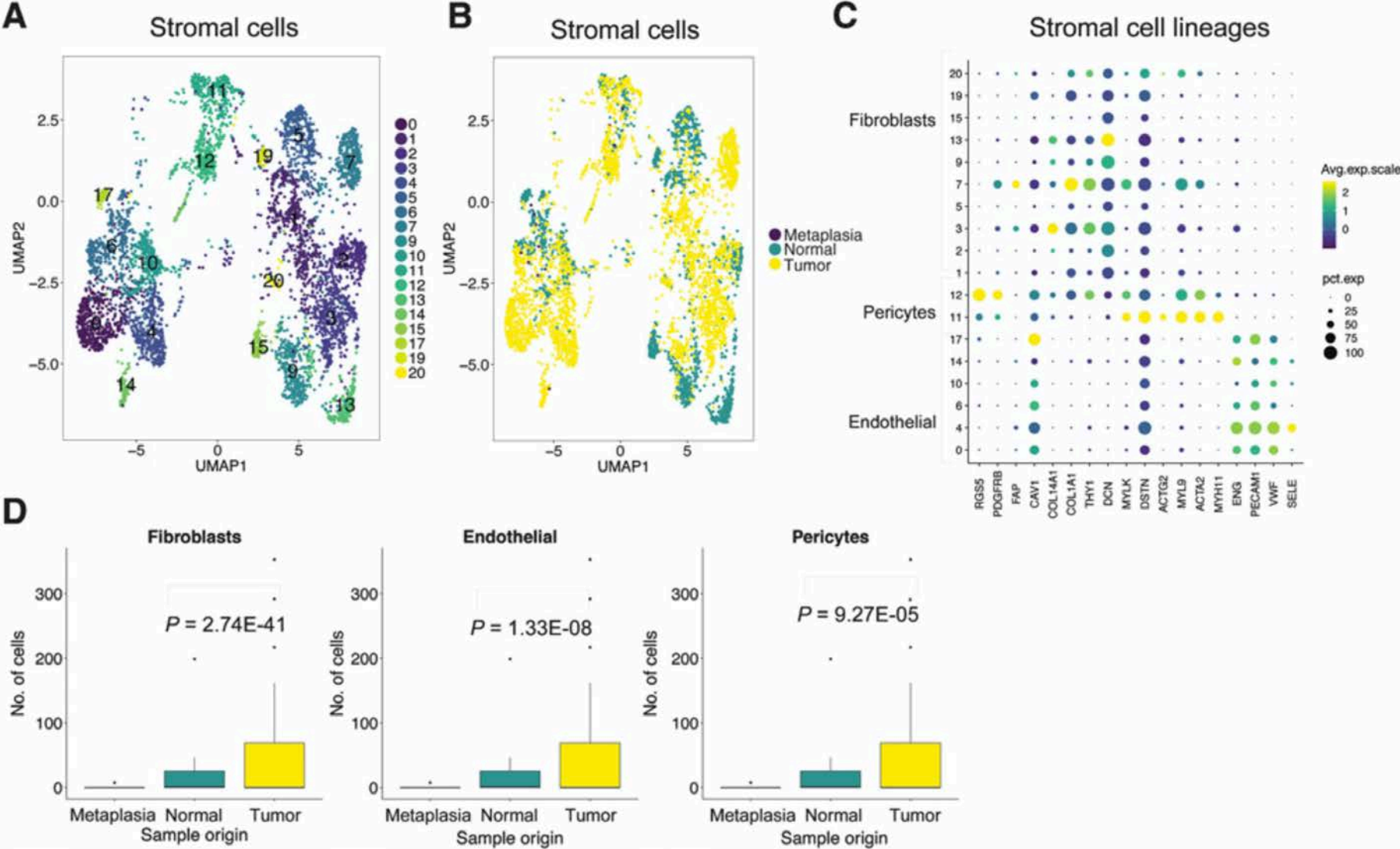
E



F

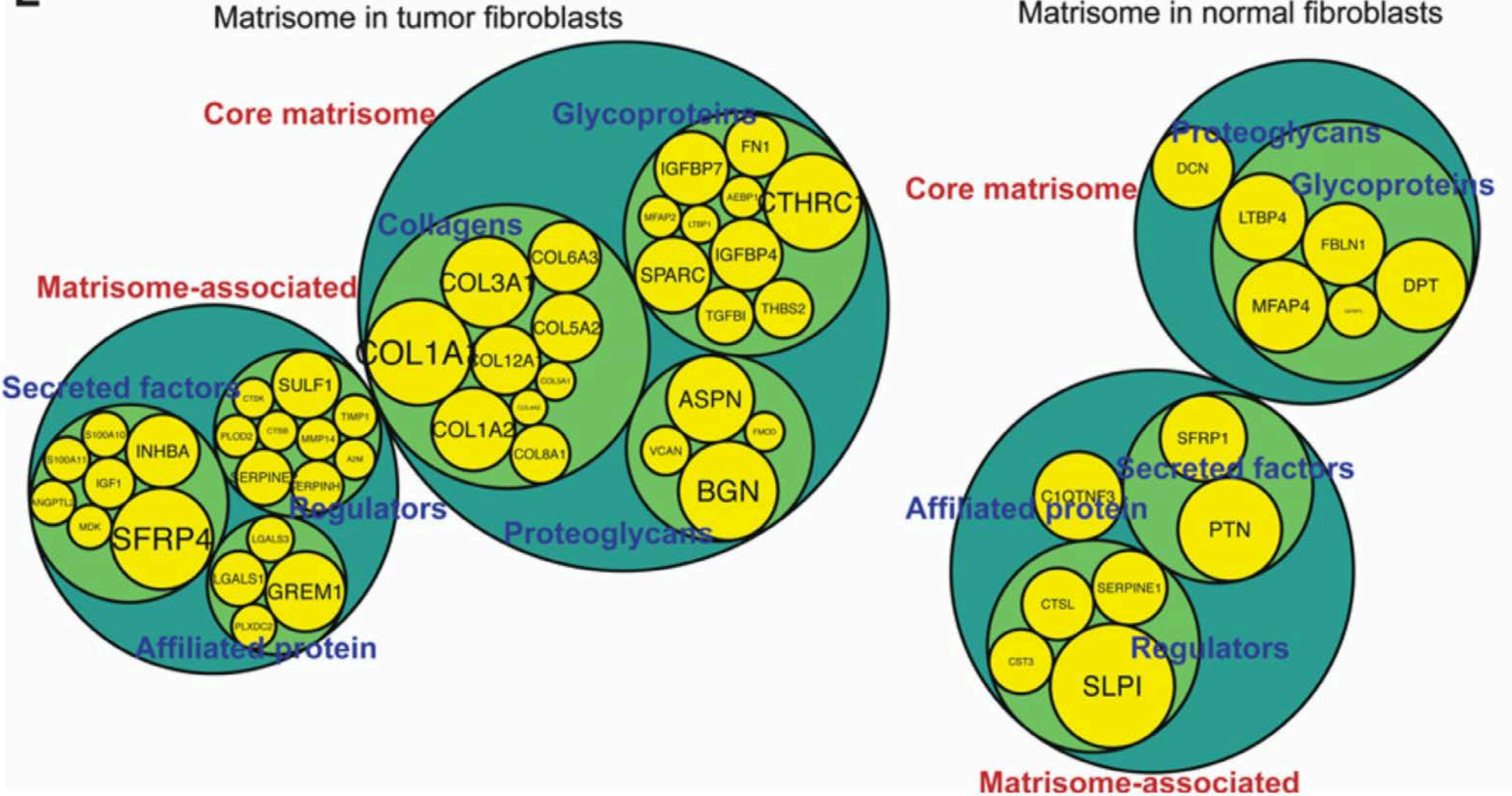


Results

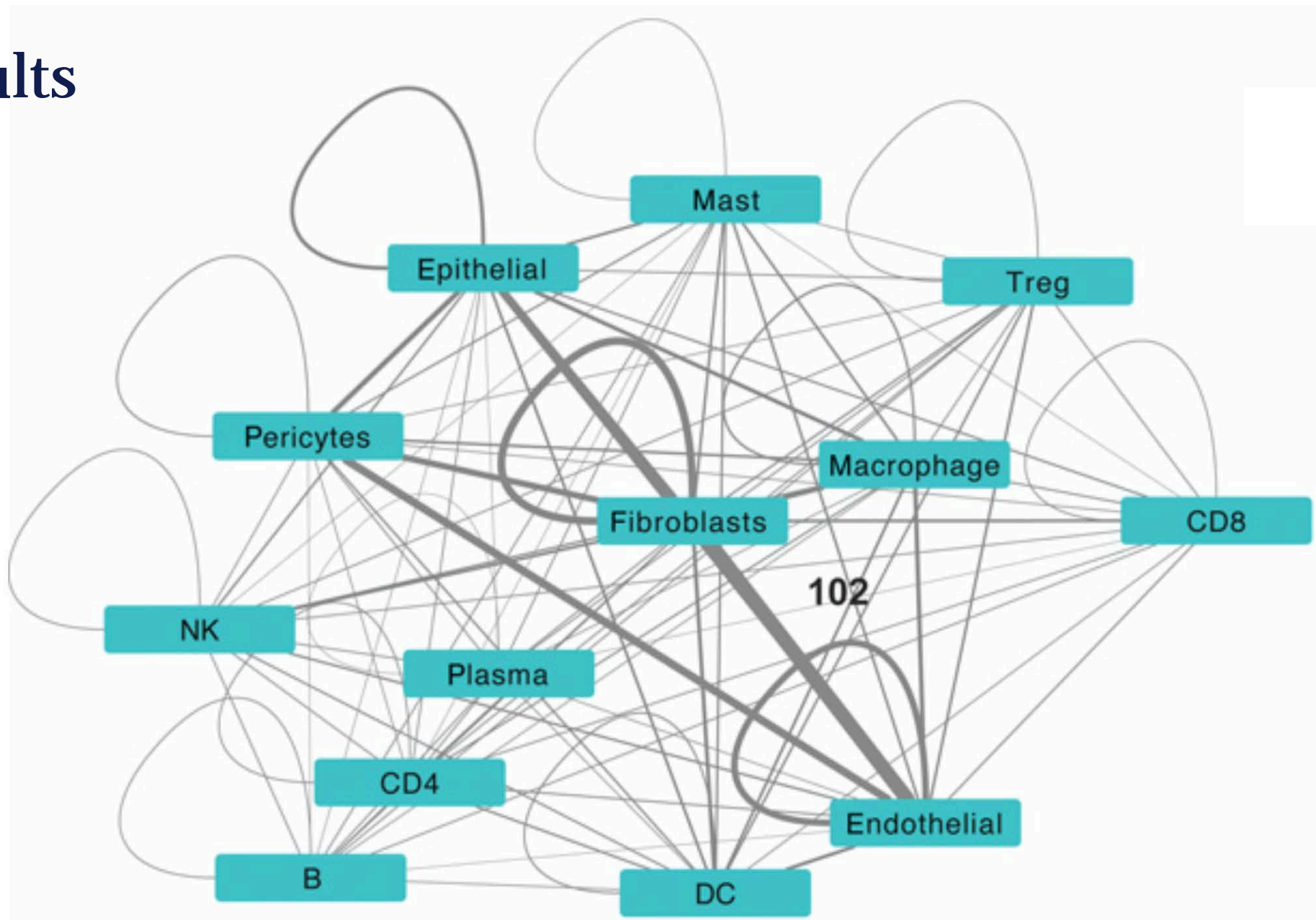


Results

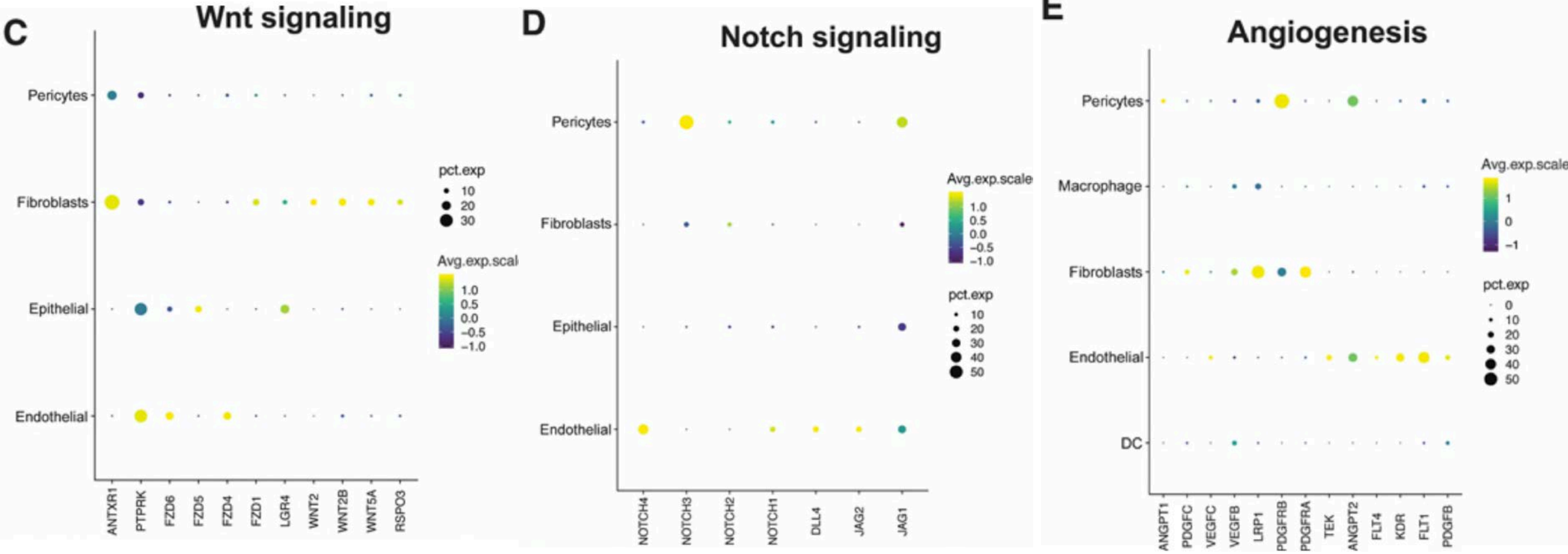
E



Results



Results



Discussion

- Cellular changes in TME compared to normal stomach mucosa
 - Number of stromal cells and Tregs ↑
 - Unique transcriptional cell states (DCs and exhausted CTLs)
 - Heterogenous macrophages gene expression discordant to binary M1/M2 system
 - Specific ECM composition
- Changes in normal, metaplastic and tumorepithelial cells
 - diversity in activation profiles
- Plasma cells in tumor tissue expressed IgGs rather than IgAs
- TEx cells in all patients with neoadjuvant therapy
- Immune cell subtypes did not cluster according MSI/MSS
- Identification of several checkpoint and co-stimulatory molecules